

Supplier's Product Code :
Product Added :
Last Updated by Supplier :
erudus id :

10862 - PPNSPAN
06 December 2012
28 December 2022
ad84869343254cb1b37e4556a4d63f33



The information on the **Erudus System** has been supplied by the manufacturers of the products and, whilst the owners of the Erudus System take steps to ensure the information is regularly updated, they give no warranty and no guarantee that the information is accurate. Product information and ingredients may change, please always read product labels carefully in addition to using the information provided by Erudus One.

We do not accept liability for any inaccuracies or incorrect information contained on this site. Please visit <http://www.erudus.com/terms-and-conditions> for full terms and conditions.

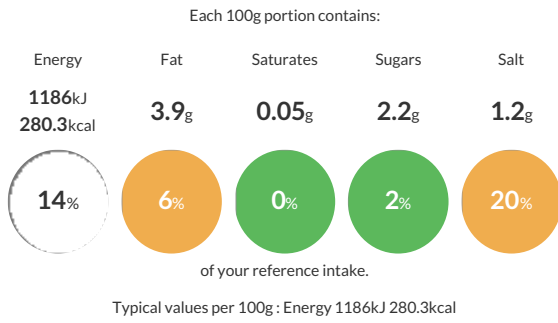
50 SESAME AND NIGELLA SEEDS PANINI 130g

Short Product Name:
SESAME AND NIGELLA SEEDS PANINI

Oval panini 130g without cut

Traded Unit GTIN: **3516870008628** Internal GTIN: Supplier: **Planète Pain** Suppliers Product Code: **10862 - PPNSPAN**

Reference Intake



Nutritional Information

Typical Values	Per 100g
Energy	1186kJ 280.3kCal
Carbohydrates	52.6g
of which sugars	2.2g
Fat	3.9g
of which saturates	0.05g
Fibre	-g
Protein	8.6g
Salt	1.2g

Allergy Information

Key: **Contains** **May Contain**



Allergen Statement

May contain traces of : Eggs, milk.

Ingredients

WHEAT flour, water, yeast, sunflower oil, salt, dehydrated devitalized WHEAT sourdough, WHEAT GLUTEN, hydrolyzed WHEAT proteins, malted WHEAT flour, enzymes.
Topping SESAME and nigella seeds.

Dietary Information

Key: **Suitable for**

