

Supplier's Product Code :
 Product Added :
 Last Updated by Supplier :
 erudus id :

22465
 28 November 2014
 20 May 2022
 ae1751119bf2408194501b55d3d2fb6d



The information on the **Erudus System** has been supplied by the manufacturers of the products and, whilst the owners of the Erudus System take steps to ensure the information is regularly updated, they give no warranty and no guarantee that the information is accurate. Product information and ingredients may change, please always read product labels carefully in addition to using the information provided by Erudus One.

We do not accept liability for any inaccuracies or incorrect information contained on this site. Please visit <http://www.erudus.com/terms-and-conditions> for full terms and conditions.

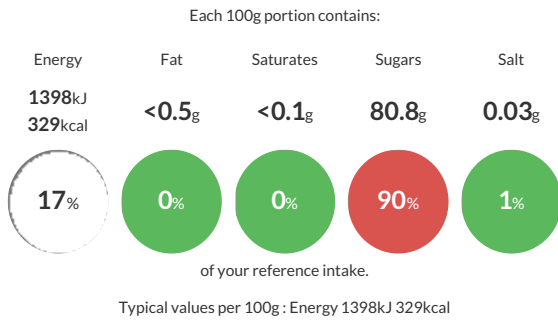
Rowse Runny Honey 680g

Short Product Name:
 Rowse Runny Honey

Rowse Runny Honey 6 x 680g The Product is packed in a 680g 30% rPET Squeezy Bottle

Traded Unit GTIN: **05011273624652** Internal GTIN: **5011273024650** Supplier : **Rowse Honey Ltd** Suppliers Product Code : **22465**

Reference Intake



Nutritional Information

Typical Values	Per 100g
Energy	1398kJ 329kCal
Carbohydrates	81.5g
of which sugars	80.8g
Fat	<0.5g
of which saturates	<0.1g
Fibre	<0.5g
Protein	0.05g
Salt	0.03g

Allergy Information

Key: **Contains** **May Contain**

Does Not Contain Cereal/Gluten	Does Not Contain Milk	Does Not Contain Eggs	Does Not Contain Peanuts	Does Not Contain Nuts	Does Not Contain Crustaceans	Does Not Contain Mustard
Does Not Contain Fish	Does Not Contain Lupin	Does Not Contain Sesame	Does Not Contain Celery	Does Not Contain Soya	Does Not Contain Molluscs	Does Not Contain Sulphur Dioxide

Dietary Information

Key: **Suitable for**

Suitable for Vegetarian	May not be suitable for Vegan	Suitable for Kosher	May not be suitable for Halal	Suitable for Coeliac
-------------------------	-------------------------------	---------------------	-------------------------------	----------------------

Gluten Claim

Gluten content is less than 20ppm.

Allergen Statement

Allergen statement on **BOP** : Not Required.

Other Allergens & Product Integrity Information: Milk, Egg, Soya and Sulphites present on site, control are in place to ensure no risk of cross contamination to honey.

Although the product is Suitable for Coeliacs and those with Lactose Intolerance, we do not carry out testing to ascertain the same.

Ingredients

100% blended honey