

Supplier's Product Code :
 Product Added :
 Last Updated by Supplier :
 erudus id :

65628
 04 November 2024
 04 November 2024
 b0c8ec3fdfa64457ae267c0a7618880a



The information on the **Erudus System** has been supplied by the manufacturers of the products and, whilst the owners of the Erudus System take steps to ensure the information is regularly updated, they give no warranty and no guarantee that the information is accurate. Product information and ingredients may change, please always read product labels carefully in addition to using the information provided by Erudus One.

We do not accept liability for any inaccuracies or incorrect information contained on this site. Please visit <http://www.erudus.com/terms-and-conditions> for full terms and conditions.

Lotus Biscoff Bitesize Biscuit 300 x 6.25g

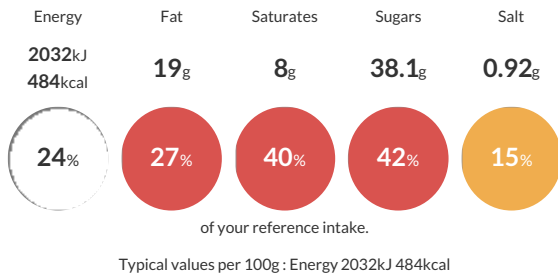
Short Product Name:
 Biscoff Bitesize Biscuit

An individually-wrapped Lotus Biscoff biscuit to be served as an accompaniment to coffee.

Traded Unit GTIN: **5410126106282** Internal GTIN: Supplier: **Lotus Bakeries UK Ltd** Suppliers Product Code: **65628**

Reference Intake

Each 100g portion contains:



Nutritional Information

Typical Values	Per 100g
Energy	2032kJ 484kCal
Carbohydrates	72.6g
of which sugars	38.1g
Fat	19g
of which saturates	8g
Fibre	1.3g
Protein	4.9g
Salt	0.92g

Allergy Information

Key: **Contains** **May Contain**

Contains Cereal/Gluten	Does Not Contain Milk	Does Not Contain Eggs	Does Not Contain Peanuts	Does Not Contain Nuts	Does Not Contain Crustaceans	Does Not Contain Mustard
Does Not Contain Fish	Does Not Contain Lupin	Does Not Contain Sesame	Does Not Contain Celery	Contains Soya	Does Not Contain Molluscs	Does Not Contain Sulphur Dioxide

Dietary Information

Key: **Suitable for**

Suitable for Vegetarian	Suitable for Vegan	May not be suitable for Kosher	Suitable for Halal	NO DATA for Coeliac
-------------------------	--------------------	--------------------------------	--------------------	---------------------

Ingredients

WHEAT flour, sugar, vegetable oils (palm*, rapeseed), candy sugar syrup, raising agent (sodium hydrogen carbonate), SOYA flour, salt, cinnamon. *palm oil from sustainable and certified plantations