

Supplier's Product Code :  
 Product Added :  
 Last Updated by Supplier :  
 erudus id :

DS021  
 03 February 2014  
 20 April 2021  
 b6334bdd2a274552b367f90108744323



The information on the Erudus System has been supplied by the manufacturers of the products and, whilst the owners of the Erudus System take steps to ensure the information is regularly updated, they give no warranty and no guarantee that the information is accurate. Product information and ingredients may change, please always read product labels carefully in addition to using the information provided by Erudus One.

We do not accept liability for any inaccuracies or incorrect information contained on this site. Please visit <http://www.erudus.com/terms-and-conditions> for full terms and conditions.

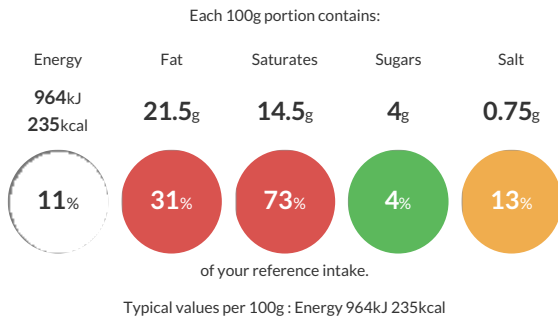
## Philadelphia Cheese 1.65 Kg

Short Product Name:  
 Philadelphia Cheese

Full Fat Soft Cheese.

Traded Unit GTIN:  Internal GTIN:  Supplier: **Cheese Cellar (H&B Foods)** Suppliers Product Code: **DS021**

### Reference Intake



### Nutritional Information

Typical Values	Per 100g
Energy	964kJ 235kCal
Carbohydrates	4g
of which sugars	4g
Fat	21.5g
of which saturates	14.5g
Fibre	0.2g
Protein	5.5g
Salt	0.75g

### Allergy Information

Key: **Contains** **May Contain**

Does Not Contain Cereal/Gluten	Contains Milk	Does Not Contain Eggs	Does Not Contain Peanuts	Does Not Contain Nuts	Does Not Contain Crustaceans	Does Not Contain Mustard
Does Not Contain Fish	Does Not Contain Lupin	Does Not Contain Sesame	Does Not Contain Celery	Does Not Contain Soya	Does Not Contain Molluscs	Does Not Contain Sulphur Dioxide

#### Gluten Claim

Gluten content is less than 20ppm.

#### Allergen Statement

Contains Milk

### Ingredients

Full Fat Soft Cheese {MILK, Stabiliser [Locust Bean Gum (E410), Acidity Regulator (E330)]}.

### Dietary Information

Key: **Suitable for**

Suitable for Vegetarian	May not be suitable for Vegan	May not be suitable for Kosher	May not be suitable for Halal	Suitable for Coeliac
-------------------------	-------------------------------	--------------------------------	-------------------------------	----------------------