

Supplier's Product Code :
Product Added :
Last Updated by Supplier :
erudus id :

FE011
03 March 2014
20 April 2021
b69c3b116bea4185946e2967ca6518ee



The information on the Erudus System has been supplied by the manufacturers of the products and, whilst the owners of the Erudus System take steps to ensure the information is regularly updated, they give no warranty and no guarantee that the information is accurate. Product information and ingredients may change, please always read product labels carefully in addition to using the information provided by Erudus One.

We do not accept liability for any inaccuracies or incorrect information contained on this site. Please visit <http://www.erudus.com/terms-and-conditions> for full terms and conditions.

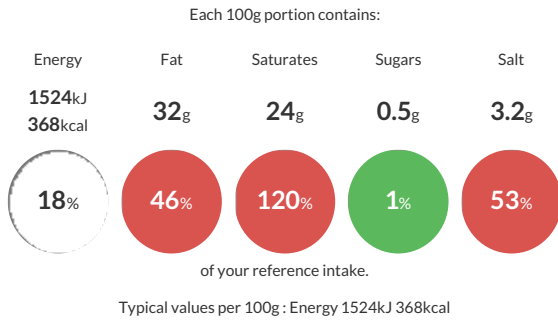
Roquefort Cantorel 1.4 Kg

Short Product Name:

Semi-soft cheese

Traded Unit GTIN: Internal GTIN: Supplier: **Cheese Cellar (H&B Foods)** Suppliers Product Code: **FE011**

Reference Intake



Nutritional Information

Typical Values	Per 100g
Energy	1524kJ 368kCal
Carbohydrates	1g
of which sugars	0.5g
Fat	32g
of which saturates	24g
Fibre	<0.5g
Protein	19g
Salt	3.2g

Allergy Information

Key: **Contains** **May Contain**



Gluten Claim

Gluten content is less than 20ppm.

Allergen Statement

Contains Milk

Dietary Information

Key: **Suitable for**



Ingredients

Unpasteurised Sheep's MILK(96%), Salt (3.5%), Animal Rennet (0.025%), Lactic Starter Cultures, Penicillium Roqueforti, Yeasts.