

Supplier's Product Code :
Product Added :
Last Updated by Supplier :
erudus id :

619054
25 July 2024
25 July 2024
b7afeaf7bb0c481d88b950b9e176d137



The information on the Erudus System has been supplied by the manufacturers of the products and, whilst the owners of the Erudus System take steps to ensure the information is regularly updated, they give no warranty and no guarantee that the information is accurate. Product information and ingredients may change, please always read product labels carefully in addition to using the information provided by Erudus One.

We do not accept liability for any inaccuracies or incorrect information contained on this site. Please visit <http://www.erudus.com/terms-and-conditions> for full terms and conditions.

LEE KUM KEE PREMIUM LIGHT SOY SAUCE 2X1.9LTR

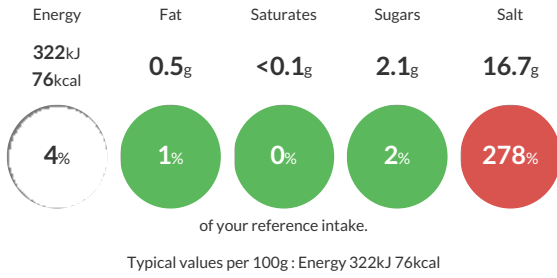
Short Product Name:
LIGHT SOY SAUCE

The Professional Range Premium Light Soy Sauce naturally brewed using traditional methods, selected soybeans and going through months of natural fermentation. It is a great sauce base for dressings.

Traded Unit GTIN: 60078895123977 Internal GTIN: 0078895123975 Supplier: Petty Wood & Co Suppliers Product Code: 619054

Reference Intake

Each 100g portion contains:



Nutritional Information

Typical Values	Per 100g
Energy	322kJ 76kCal
Carbohydrates	8.2g
of which sugars	2.1g
Fat	0.5g
of which saturates	<0.1g
Fibre	0g
Protein	8.2g
Salt	16.7g

Allergy Information

Key: Contains May Contain



Allergen Statement

Contains: Soya, Wheat/Gluten.
made with NON_GM Soybeans

Ingredients

Water, salt, SOYBEANS 12%, WHEAT Flour.

Dietary Information

Key: Suitable for

