

Supplier's Product Code :
Product Added :
Last Updated by Supplier :
erudus id :

F02164
25 June 2018
31 August 2023
b989bc52586640168265456fd50f7450



The information on the Erudus System has been supplied by the manufacturers of the products and, whilst the owners of the Erudus System take steps to ensure the information is regularly updated, they give no warranty and no guarantee that the information is accurate. Product information and ingredients may change, please always read product labels carefully in addition to using the information provided by Erudus One.

We do not accept liability for any inaccuracies or incorrect information contained on this site. Please visit <http://www.erudus.com/terms-and-conditions> for full terms and conditions.

Triple Chocolate Muffin

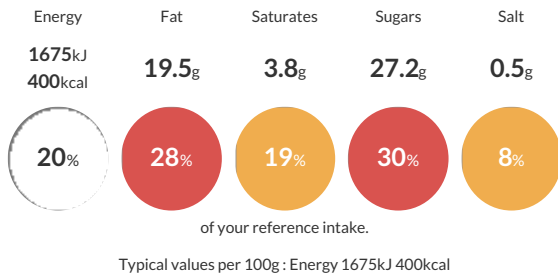
Short Product Name:
Triple Chocolate Muffin

A devilishly moist triple chocolate muffin, including white, milk and dark chocolate chunks and an indulgent chocolate filling.

Traded Unit GTIN: 05010066121644 Internal GTIN: 05010066121644 Supplier: Kara Foodservice (Fletchers) Suppliers Product Code: F02164

Reference Intake

Each 100g portion contains:



Nutritional Information

Typical Values	Per 100g
Energy	1675kJ 400kCal
Carbohydrates	49.6g
of which sugars	27.2g
Fat	19.5g
of which saturates	3.8g
Fibre	1.8g
Protein	5.7g
Salt	0.5g

Allergy Information

Key: Contains May Contain



Dietary Information

Key: Suitable for



Allergen Statement

For allergens, including cereals containing gluten, see ingredients in **CAPITALS**. Also, may contain sesame.

Ingredients

Wheat Flour (**WHEAT** Flour, Calcium Carbonate, Niacin, Iron, Thiamin), Rapeseed Oil, Sugar, **EGG**, Chocolate Filling (8%) (Sugar, Glucose Syrup, Rapeseed Oil, Water, Fat Reduced Cocoa Powder, Palm Oil, Sweetened Condensed **MILK**, Butter (**MILK**), Cocoa Mass, Emulsifiers (E471, E322 (**SOYA**)), Flavouring, Salt, Cocoa Butter, Preservative (E202)), White Chocolate Chunks (5%) (Sugar, Dried Whole **MILK**, Cocoa Butter, Dried Skimmed **MILK**, Emulsifier (E322 (**SOYA**)), Flavouring), Dark Chocolate Chunks (3.5%) (Sugar, Cocoa Mass, Cocoa Butter, Emulsifier (E322 (**SOYA**)), Flavouring), Fat Reduced Cocoa Powder, Cornflour, **EGG** White, Water, Milk Chocolate Chunks (1%) (Sugar, Dried Whole **MILK**, Cocoa Butter, Cocoa Mass, Dried Whey (**MILK**), Dried Skimmed **MILK**, Emulsifier (E322 (**SOYA**)), Flavouring), Raising Agents (E450i, E501ii), Maltodextrin, Dried Whey (**MILK**), Emulsifier (E471), Salt.