

Supplier's Product Code :
Product Added :
Last Updated by Supplier :
erudus id :

GR2063000F
19 January 2015
23 June 2023
b9d05ddbc22e49a7866c8adbab6c8bd5



The information on the Erudus System has been supplied by the manufacturers of the products and, whilst the owners of the Erudus System take steps to ensure the information is regularly updated, they give no warranty and no guarantee that the information is accurate. Product information and ingredients may change, please always read product labels carefully in addition to using the information provided by Erudus One.

We do not accept liability for any inaccuracies or incorrect information contained on this site. Please visit <http://www.erudus.com/terms-and-conditions> for full terms and conditions.

Mini Doughnuts Filled w/ Nutella® Frozen 3x1Kg

Short Product Name:

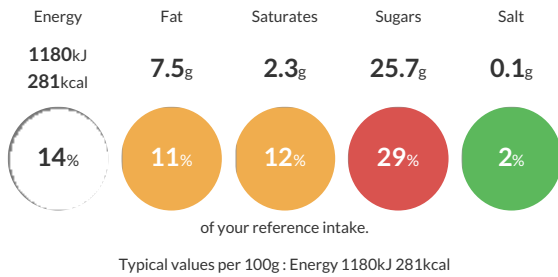
Mini Doughnuts Filled w/ Nutella®

Soft parcels made from potatoes and chocolate filled with Hazelnuts

Traded Unit GTIN: - Internal GTIN: 5055430401373 Supplier: La Tua Pasta Suppliers Product Code: GR2063000F

Reference Intake

Each 100g portion contains:



Nutritional Information

Typical Values	Per 100g
Energy	1180kJ 281kCal
Carbohydrates	49.2g
of which sugars	25.7g
Fat	7.5g
of which saturates	2.3g
Fibre	-g
Protein	3.2g
Salt	0.1g

Allergy Information

Key: Contains May Contain



Allergen Statement

Produced in a factory that handles Wheat, Egg, Milk, Nut, Mustard, Crustacean, Fish, Celery, Soy and Sulphites.

Ingredients

Pasta (78%): Potato Puree, Water, Sugar, Chocolate Powder (1%). Potato Puree contains: Milled Potato Flakes (Potato, Emulsifier: E471 (Palm Free), Antioxidant Sodium METABISULPHITE E223, spices, Vegetable Extracts) (70%), Starch (Corn, WHEAT), Salt, Flour (WHEAT), spices.

Filling (22%): Nutella (Sugar, Palm Oil, HAZELNUTS, Fat-Reduced Cocoa, Skimmed MILK powder, Whey Powder (MILK), Emulsifier E322 Lecithin (SOYA), Vanillin).

Dusted with rice flour.

Dietary Information

Key: Suitable for

