

Supplier's Product Code :  
Product Added :  
Last Updated by Supplier :  
erudus id :

611496  
17 May 2021  
11 February 2022  
ba36f02a8dfb47558a1d6857009b2003



The information on the Erudus System has been supplied by the manufacturers of the products and, whilst the owners of the Erudus System take steps to ensure the information is regularly updated, they give no warranty and no guarantee that the information is accurate. Product information and ingredients may change, please always read product labels carefully in addition to using the information provided by Erudus One.

We do not accept liability for any inaccuracies or incorrect information contained on this site. Please visit <http://www.erudus.com/terms-and-conditions> for full terms and conditions.

## CADBURY CRUNCHIE MILK CHOCOLATE 40 GR 48CA

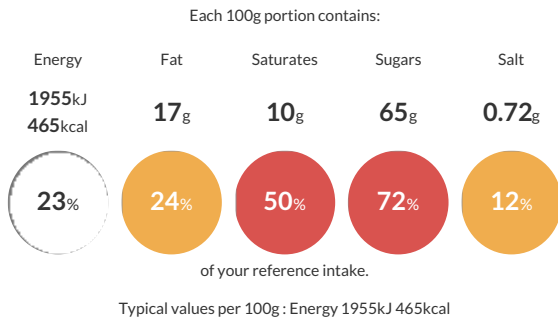
**Warning!** This Product Specification complies with EU Food Information Regulation No. 1169/2011 (FIR) however we are still awaiting further product attributes to complete the full Erudus specification.

Short Product Name:

CADBURY CRUNCHIE CHOCOLATE BAR MILK CHOCOLATE 40 GR

Traded Unit GTIN: 5000201160744 Internal GTIN: 5000201468611 Supplier: Mondelez UK Ltd Suppliers Product Code: 611496

### Reference Intake



### Nutritional Information

Typical Values	Per 100g
Energy	1955kJ 465kCal
Carbohydrates	74g
of which sugars	65g
Fat	17g
of which saturates	10g
Fibre	1.3g
Protein	3.1g
Salt	0.72g

### Allergy Information

Key: **Contains** **May Contain**



### Dietary Information

Key: **Suitable for**



### Ingredients

Ingredients: Sugar, glucose syrup, cocoa butter, cocoa mass, skimmed MILK powder, whey permeate powder (from MILK), palm oil, MILK fat, emulsifier (E442), flavourings, coconut oil.