

Supplier's Product Code :
Product Added :
Last Updated by Supplier :
erudus id :

IR110735
23 December 2015
08 June 2022
bc02498a52bf4179ad561aa490153646



The information on the Erudus System has been supplied by the manufacturers of the products and, whilst the owners of the Erudus System take steps to ensure the information is regularly updated, they give no warranty and no guarantee that the information is accurate. Product information and ingredients may change, please always read product labels carefully in addition to using the information provided by Erudus One.

We do not accept liability for any inaccuracies or incorrect information contained on this site. Please visit <http://www.erudus.com/terms-and-conditions> for full terms and conditions.

Sushi Rice 10x1kg

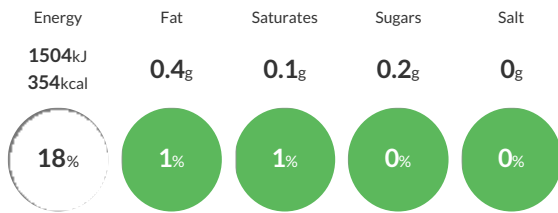
Short Product Name:

Italian round white grain rice, soft tender and naturally sticky. Ideal for preparation of sushi rice.

Traded Unit GTIN: 58002130200821 Internal GTIN: 8002130200826 Supplier: Bonta Italia Ltd Suppliers Product Code: IR110735

Reference Intake

Each 100g portion contains:



of your reference intake.

Typical values per 100g : Energy 1504kJ 354kcal

Nutritional Information

Typical Values	Per 100g
Energy	1504kJ 354kCal
Carbohydrates	80.4g
of which sugars	0.2g
Fat	0.4g
of which saturates	0.1g
Fibre	-g
Protein	6.7g
Salt	0g

Allergy Information

Key: Contains May Contain



Gluten Claim

Gluten content is less than 20ppm.

Ingredients

Round Grain White Rice.

Dietary Information

Key: Suitable for

