

Supplier's Product Code :
Product Added :
Last Updated by Supplier :
erudus id :

CHCF5KG
20 December 2022
05 October 2023
bcc2acefac1a441ca8eddcedfcb92428



The information on the Erudus System has been supplied by the manufacturers of the products and, whilst the owners of the Erudus System take steps to ensure the information is regularly updated, they give no warranty and no guarantee that the information is accurate. Product information and ingredients may change, please always read product labels carefully in addition to using the information provided by Erudus One.

We do not accept liability for any inaccuracies or incorrect information contained on this site. Please visit <http://www.erudus.com/terms-and-conditions> for full terms and conditions.

CHEESECAKE FILLING MIX 4x1.25kg

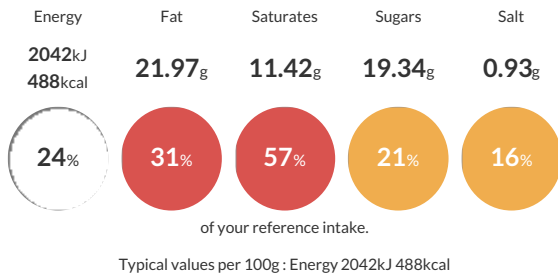
Short Product Name:
CHEESECAKE FILLING MIX

A dry mix for manufacturing purposes, which, on reconstitution as instructed, produces a Cheesecake Filling.

Traded Unit GTIN: **5020933035615** Internal GTIN: **5020933030627** Supplier: **Sleaford Quality Foods** Suppliers Product Code: **CHCF5KG**

Reference Intake

Each 100g portion contains:



Nutritional Information

Typical Values	Per 100g
Energy	2042kJ 488kCal
Carbohydrates	66.4g
of which sugars	19.34g
Fat	21.97g
of which saturates	11.42g
Fibre	3.81g
Protein	7.91g
Salt	0.93g

Allergy Information

Key: **Contains** **May Contain**



Allergen Statement
Contains Milk

Ingredients

Emulsifier (Glucose Syrup Solids, Hydrogenated Coconut Oil, Lactic acid esters of mono-and diglycerides of fatty acids E472b, Sodium Caseinate (MILK), Dipotassium Phosphate E340ii), Sugar, Whey Powder (MILK), Maltodextrin, Cheese Powder (Cheese Powder (MILK), Whey Powder, Salt), Modified Starch, Gelling Agent (E407), Citric Acid, Salt, Flavourings, Colour E160a (i)

Dietary Information

Key: **Suitable for**

