

Supplier's Product Code :
Product Added :
Last Updated by Supplier :
erudus id :

13446
31 August 2016
03 May 2023
c129dda33f3e427ea23551ae974f7c39



The information on the **Erudus System** has been supplied by the manufacturers of the products and, whilst the owners of the Erudus System take steps to ensure the information is regularly updated, they give no warranty and no guarantee that the information is accurate. Product information and ingredients may change, please always read product labels carefully in addition to using the information provided by Erudus One.

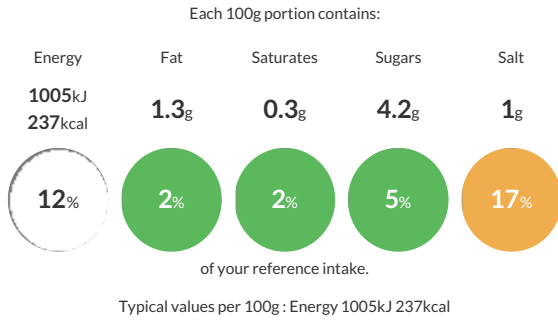
We do not accept liability for any inaccuracies or incorrect information contained on this site. Please visit <http://www.erudus.com/terms-and-conditions> for full terms and conditions.

800g 14+2 White D Tin [Box x 8FR]

White Bloomer Bread

Traded Unit GTIN: 05011579221050 Internal GTIN: Supplier: Frank Roberts & Sons Ltd Suppliers Product Code: 13446

Reference Intake

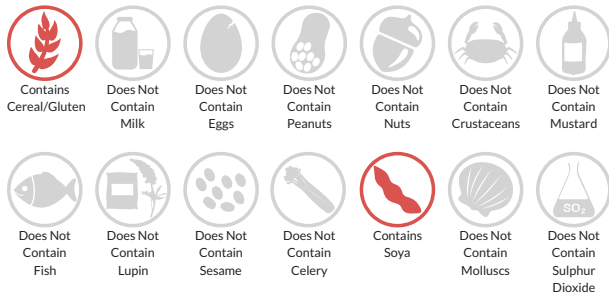


Nutritional Information

Typical Values	Per 100g
Energy	1005kJ 237kCal
Carbohydrates	45.4g
of which sugars	4.2g
Fat	1.3g
of which saturates	0.3g
Fibre	4.2g
Protein	8.9g
Salt	1g

Allergy Information

Key: **Contains** **May Contain**



Allergen Statement

For allergens including cereals containing gluten, see ingredients in **CAPITALS**.

Ingredients

WHEAT Flour (with added calcium, iron, niacin and thiamine), Water, Yeast, Salt, SOYA Flour, Preservative: E282. Emulsifier: E472e. Rapeseed Oil, Flour Treatment Agent: E300.

Dietary Information

Key: **Suitable for**

