

Supplier's Product Code :
Product Added :
Last Updated by Supplier :
erudus id :

H1537
01 February 2024
01 February 2024
c3df814878324e119d0890367d665c12



The information on the Erudus System has been supplied by the manufacturers of the products and, whilst the owners of the Erudus System take steps to ensure the information is regularly updated, they give no warranty and no guarantee that the information is accurate. Product information and ingredients may change, please always read product labels carefully in addition to using the information provided by Erudus One.

We do not accept liability for any inaccuracies or incorrect information contained on this site. Please visit <http://www.erudus.com/terms-and-conditions> for full terms and conditions.

6x1L Monin Chai Tea concentrate

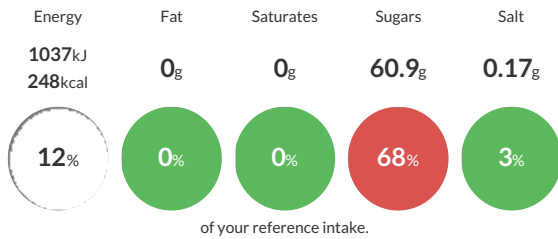
Short Product Name:
6x1L Chai Tea concentrate

Chai Tea concentrate

Traded Unit GTIN: 13052911617215 Internal GTIN: 3052911289675 Supplier: Bennett Opie Ltd Suppliers Product Code: H1537

Reference Intake

Each 100ml portion contains:



Typical values per 100ml: Energy 1037kJ 248kcal

Nutritional Information

Typical Values	Per 100ml
Energy	1037kJ 248kCal
Carbohydrates	61.5g
of which sugars	60.9g
Fat	0g
of which saturates	0g
Fibre	0g
Protein	0.2g
Salt	0.17g

Allergy Information

Key: Contains May Contain



Dietary Information

Key: Suitable for



Ingredients

Sugar, water, tea extract (1g/l diluted in 1+10), colour (E150a), natural flavouring, acid (citric acid), emulsifier (acacia gum), natural tea flavouring, preservative (potassium sorbate).