

Supplier's Product Code :
Product Added :
Last Updated by Supplier :
erudus id :

4055534
22 December 2020
22 December 2020
c61f9c810928488996a000762653e965



The information on the **Erudus System** has been supplied by the manufacturers of the products and, whilst the owners of the Erudus System take steps to ensure the information is regularly updated, they give no warranty and no guarantee that the information is accurate. Product information and ingredients may change, please always read product labels carefully in addition to using the information provided by Erudus One.

We do not accept liability for any inaccuracies or incorrect information contained on this site. Please visit <http://www.erudus.com/terms-and-conditions> for full terms and conditions.

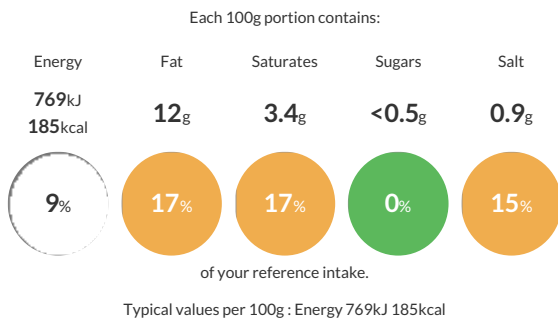
Frozen Traditional Duck Leg confit 285g x 1 x 20

Short Product Name:

Birds are slaughtered and eviscerated in an EC approved slaughterhouse. Birds are to be class A and free from excessive feathers and debris. Ducks are portioned and legs are weight graded. Legs are tumbled with dry confit seasoning addition. Marinated legs are vacuum packed x1 with garlic clove and bay leaf and sent to cookhouse. Cook legs received frozen are then labelled, metal detected and packed in a box. Lid is placed, case end label applied, boxes are palletized and stored frozen.

Traded Unit GTIN: **05016157535550** Internal GTIN: Supplier: **Gressingham Foods** Suppliers Product Code: **4055534**

Reference Intake



Nutritional Information

Typical Values	Per 100g
Energy	769kJ 185kCal
Carbohydrates	<0.5g
of which sugars	<0.5g
Fat	12g
of which saturates	3.4g
Fibre	<0.5g
Protein	19g
Salt	0.9g

Allergy Information

Key: **Contains** **May Contain**



Gluten Claim

Gluten content is less than 20ppm.

Allergen Statement

Product does not contain allergens.

Ingredients

Duck 98%, Garlic Clove, Confit Seasoning (Salt, Garlic, Thyme, Rosemary, Cornflour, Black Pepper), Bay Leaf

Dietary Information

Key: **Suitable for**

