

Supplier's Product Code :
Product Added :
Last Updated by Supplier :
erudus id :

AV0552
28 June 2011
30 November 2022
c6c34684a6db446587d60514b5687148



The information on the **Erudus System** has been supplied by the manufacturers of the products and, whilst the owners of the Erudus System take steps to ensure the information is regularly updated, they give no warranty and no guarantee that the information is accurate. Product information and ingredients may change, please always read product labels carefully in addition to using the information provided by Erudus One.

We do not accept liability for any inaccuracies or incorrect information contained on this site. Please visit <http://www.erudus.com/terms-and-conditions> for full terms and conditions.

Belgian Cinnamon Waffles 20x90g

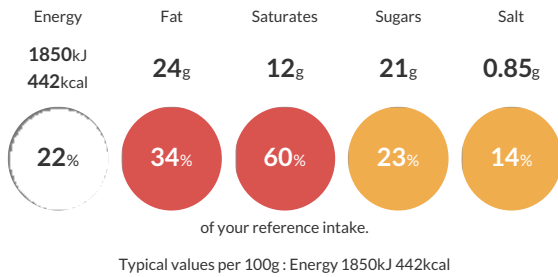
Short Product Name:
Belgian Cinnamon Waffles

Belgian waffles

Traded Unit GTIN: **5060177080675** Internal GTIN: Supplier: **The Foodfellas** Suppliers Product Code: **AV0552**

Reference Intake

Each 100g portion contains:



Nutritional Information

Typical Values	Per 100g
Energy	1850kJ 442kCal
Carbohydrates	50g
of which sugars	21g
Fat	24g
of which saturates	12g
Fibre	2.1g
Protein	5.6g
Salt	0.85g

Allergy Information

Key: **Contains** **May Contain**



Dietary Information

Key: **Suitable for**



Ingredients

WHEAT flour, Margarine (palm fat, coconut fat, water, rapeseed oil, emulsifier (mono- and diglycerides of fatty acids)), sugar, water, **EGGS**, invert sugar, yeast, **SOYA** flour, salt, Cinnamon (<1%), Emulsifier (**SOYA** lecithin), Flavouring (Vanillin).