

The information on the [Erudus System](#) has been supplied by the manufacturers of the products and, whilst the owners of the Erudus System take steps to ensure the information is regularly updated, they give no warranty and no guarantee that the information is accurate. Product information and ingredients may change, please always read product labels carefully in addition to using the information provided by Erudus One.

We do not accept liability for any inaccuracies or incorrect information contained on this site. Please visit <http://www.erudus.com/terms-and-conditions> for full terms and conditions.

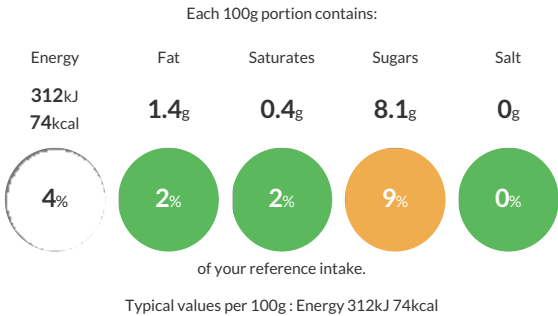
Greens Sweetcorn 4 x 2.5 kg

Short Product Name:
Sweetcorn

Greens Sweetcorn

Traded Unit GTIN: 5413408422117 Internal GTIN: 5413408112223 Supplier : D'Arta S.A. Suppliers Product Code: 21114291

Reference Intake



Nutritional Information

Typical Values	Per 100g
Energy	312kJ 74kCal
Carbohydrates	11.6g
of which sugars	8.1g
Fat	1.4g
of which saturates	0.4g
Fibre	2.5g
Protein	2.5g
Salt	0g

Allergy Information

Key: Contains May Contain

Gluten < 20ppm
Does Not Contain Cereal/Gluten

Does Not Contain Milk

Does Not Contain Eggs

Does Not Contain Peanuts

Does Not Contain Nuts

Does Not Contain Crustaceans

Does Not Contain Mustard

Does Not Contain Fish

Does Not Contain Lupin

Does Not Contain Sesame

Does Not Contain Celery

Does Not Contain Soya

Does Not Contain Molluscs

Does Not Contain Sulphur Dioxide

Gluten Claim
Gluten content is less than 20ppm.

Ingredients

Sweetcorn (100%)

Dietary Information

Key: Suitable for

Suitable for Vegetarian

Suitable for Vegan

May not be suitable for Kosher

May not be suitable for Halal

Suitable for Coeliac