

Supplier's Product Code :
Product Added :
Last Updated by Supplier :
erudus id :

012211P
29 February 2024
01 March 2024
c73d6ef47d264fc7a57666ff06017dbe



The information on the **Erudus System** has been supplied by the manufacturers of the products and, whilst the owners of the Erudus System take steps to ensure the information is regularly updated, they give no warranty and no guarantee that the information is accurate. Product information and ingredients may change, please always read product labels carefully in addition to using the information provided by Erudus One.

We do not accept liability for any inaccuracies or incorrect information contained on this site. Please visit <http://www.erudus.com/terms-and-conditions> for full terms and conditions.

Purple Pineapple BBQ Pulled Pork 1kg

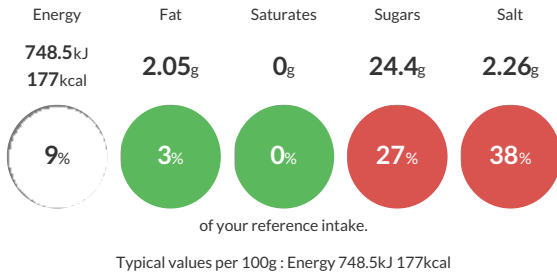
Short Product Name:
BBQ Pulled Pork

Pulled pork in an American style BBQ sauce

Traded Unit GTIN: Internal GTIN: Supplier: **Kff Ltd** Suppliers Product Code: **012211P**

Reference Intake

Each 100g portion contains:



Nutritional Information

Typical Values	Per 100g
Energy	748.5kJ 177kCal
Carbohydrates	25.35g
of which sugars	24.4g
Fat	2.05g
of which saturates	0g
Fibre	0.9g
Protein	12.25g
Salt	2.26g

Allergy Information

Key: **Contains** **May Contain**



Dietary Information

Key: **Suitable for**



Ingredients

BBQ Sauce American 50% (Sugar, tomato paste, water, spirit vinegar, molasses, salt, modified maize starch, smoke flavouring, onion, garlic, paprika, coriander, black pepper, flavourings, nutmeg, natural flavouring) Pork 50% (Pork, salt).