

Supplier's Product Code :
Product Added :
Last Updated by Supplier :
erudus id :

SW00071 - ECVGL/1
25 September 2024
25 September 2024
c76b95db40024fb48e258385f61e89d3



The information on the [Erudus System](#) has been supplied by the manufacturers of the products and, whilst the owners of the Erudus System take steps to ensure the information is regularly updated, they give no warranty and no guarantee that the information is accurate. Product information and ingredients may change, please always read product labels carefully in addition to using the information provided by Erudus One.

We do not accept liability for any inaccuracies or incorrect information contained on this site. Please visit <http://www.erudus.com/terms-and-conditions> for full terms and conditions.

Veal Glace 600g

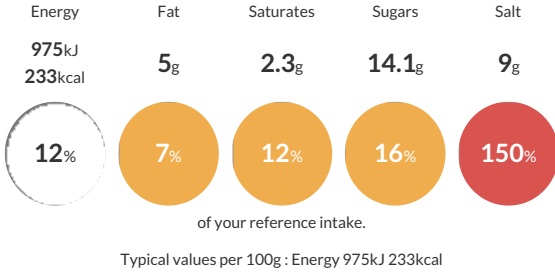
Short Product Name:
Veal Glace

A composite paste, produced by the blending of food ingredients. A dark brown coloured reasonably viscous paste, with a distinctive odour of veal. It has the characteristic appearance and flavour of Veal Glace when reconstituted with water as directed.

Traded Unit GTIN: **05029540000481** Internal GTIN: **5029540000474** Supplier: **Essential Cuisine Limited** Suppliers Product Code: **SW00071 - ECVGL/1**

Reference Intake

Each 100g portion contains:



Nutritional Information

Typical Values	Per 100g
Energy	975kJ 233kCal
Carbohydrates	30g
of which sugars	14.1g
Fat	5g
of which saturates	2.3g
Fibre	0.01g
Protein	17g
Salt	9g

Allergy Information

Key: **Contains** **May Contain**



Dietary Information

Key: **Suitable for**



Gluten Claim

Gluten content is less than 20ppm.

Ingredients

Ingredients when reconstituted:

Veal Stock (Water, Veal Stock, Tomato, Carrot, Mushroom, Onion, Garlic), Yeast Extract, Glucose, Maltodextrin, Salt.