

Supplier's Product Code :  
 Product Added :  
 Last Updated by Supplier :  
 erudus id :

12233383  
 18 March 2016  
 09 August 2022  
 c796fa2c05d043e6b900f5f5d06ac7aa



The information on the **Erudus System** has been supplied by the manufacturers of the products and, whilst the owners of the Erudus System take steps to ensure the information is regularly updated, they give no warranty and no guarantee that the information is accurate. Product information and ingredients may change, please always read product labels carefully in addition to using the information provided by Erudus One.

We do not accept liability for any inaccuracies or incorrect information contained on this site. Please visit <http://www.erudus.com/terms-and-conditions> for full terms and conditions.

## ROLO Tube 36x52g

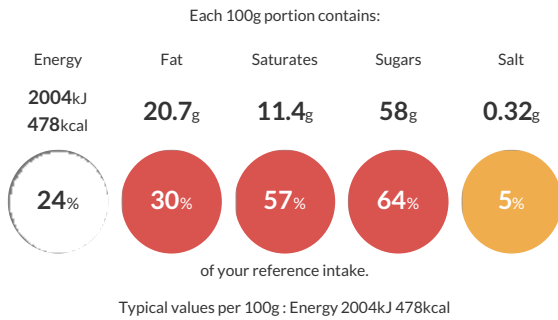
Short Product Name:

Rolo Milk Chocolate & Caramel Tube 52g

Milk chocolates with a soft toffee centre (45%).

Traded Unit GTIN: **5000189203686** Internal GTIN: **50251179** Supplier: **Nestle UK** Suppliers Product Code: **12233383**

### Reference Intake



### Nutritional Information

Typical Values	Per 100g
Energy	2004kJ 478kCal
Carbohydrates	67.4g
of which sugars	58g
Fat	20.7g
of which saturates	11.4g
Fibre	1.2g
Protein	4.8g
Salt	0.32g

### Allergy Information

Key: **Contains** **May Contain**



### Dietary Information

Key: **Suitable for**



### Allergen Statement

Contains: **MILK**. May Contain: **GLUTEN** from **WHEAT**

### Ingredients

Glucose Syrup, Sugar, Whole and Skimmed **MILK** Powder, Invert Sugar Syrup, Cocoa Mass, Vegetable Fats (Palm, Mango Kernel, Sal, Shea), Cocoa Butter, Sweetened Condensed Skimmed **MILK**, Butterfat (from **MILK**), Lactose and Proteins from Whey (from **MILK**), Whey Powder (from **MILK**), Emulsifier (Sunflower Lecithin), Salt, Flavourings, **MILK** Chocolate contains **MILK** Solids 14% minimum and Vegetable Fat in addition to Cocoa Butter