

Supplier's Product Code :
Product Added :
Last Updated by Supplier :
erudus id :

209670
19 September 2024
19 September 2024
c7b374af692240a8a4444e9acded7447



The information on the [Erudus System](#) has been supplied by the manufacturers of the products and, whilst the owners of the Erudus System take steps to ensure the information is regularly updated, they give no warranty and no guarantee that the information is accurate. Product information and ingredients may change, please always read product labels carefully in addition to using the information provided by Erudus One.

We do not accept liability for any inaccuracies or incorrect information contained on this site. Please visit <http://www.erudus.com/terms-and-conditions> for full terms and conditions.

Lipton Ice Tea Mango PET 500ml x 12

Short Product Name:

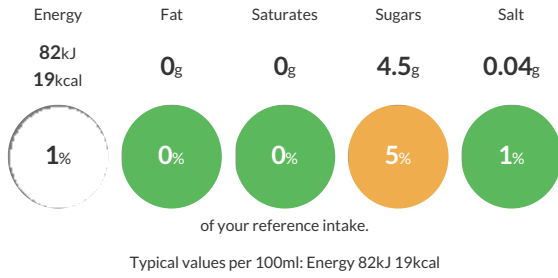
Still Soft Drink with Tea Extract and Mango Juice with Sugars and Sweetener

Does Not Contain Preservatives Does Not Contain Colours Contains Naturally Sourced Sweetener(s) Contains Artificial Flavouring(s) Suitable for vegetarians and vegans

Traded Unit GTIN: **05000118061912** Internal GTIN: **5000118061905** Supplier : **Britvic Soft Drinks Limited** Suppliers Product Code : **209670**

Reference Intake

Each 100ml portion contains:



Nutritional Information

Typical Values	Per 100ml
Energy	82kJ 19kCal
Carbohydrates	4.6g
of which sugars	4.5g
Fat	0g
of which saturates	0g
Fibre	-g
Protein	0g
Salt	0.04g

Allergy Information

Key: **Contains** **May Contain**



Dietary Information

Key: **Suitable for**



Ingredients

Water, Sugars (Sucrose, Fructose), Acid (Citric Acid), Black Tea Extract (0.12%), Mango Juice from Concentrate (0.1%), Acidity Regulator (Trisodium Citrate), Flavourings, Antioxidant (Ascorbic Acid), Sweetener (Steviol Glycosides from Stevia).