

Supplier's Product Code :
Product Added :
Last Updated by Supplier :
erudus id :

38150
04 November 2024
04 November 2024
c7d7595afc3b4681890b821b5c7f0a78



The information on the Erudus System has been supplied by the manufacturers of the products and, whilst the owners of the Erudus System take steps to ensure the information is regularly updated, they give no warranty and no guarantee that the information is accurate. Product information and ingredients may change, please always read product labels carefully in addition to using the information provided by Erudus One.

We do not accept liability for any inaccuracies or incorrect information contained on this site. Please visit <http://www.erudus.com/terms-and-conditions> for full terms and conditions.

Tiptree Orange Marmalade Fine Cut 72x28g

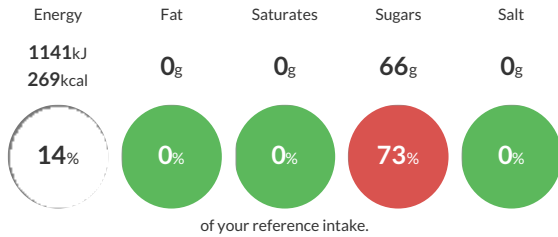
Short Product Name:
Orange Marmalade

Tiptree Orange Marmalade, Fine Cut

Traded Unit GTIN: 00043647381507 Internal GTIN: Supplier: Wilkin and Sons Ltd (Tiptree) Suppliers Product Code: 38150

Reference Intake

Each 100g portion contains:



Typical values per 100g : Energy 1141kJ 269kcal

Nutritional Information

Typical Values	Per 100g
Energy	1141kJ 269kCal
Carbohydrates	67g
of which sugars	66g
Fat	0g
of which saturates	0g
Fibre	-g
Protein	0g
Salt	0g

Allergy Information

Key: Contains May Contain



Dietary Information

Key: Suitable for



Ingredients

Sugar, Seville Oranges, Gelling Agent, Citrus Pectin