

Supplier's Product Code :  
Product Added :  
Last Updated by Supplier :  
erudus id :

TKLOB082250F0000NI  
12 December 2024  
12 December 2024  
c8cbd113cd144108989527015ac2c4f7



The information on the Erudus System has been supplied by the manufacturers of the products and, whilst the owners of the Erudus System take steps to ensure the information is regularly updated, they give no warranty and no guarantee that the information is accurate. Product information and ingredients may change, please always read product labels carefully in addition to using the information provided by Erudus One.

We do not accept liability for any inaccuracies or incorrect information contained on this site. Please visit <http://www.erudus.com/terms-and-conditions> for full terms and conditions.

## 120677 Turkey Breast Single Skin On (Whole Lobe) x1

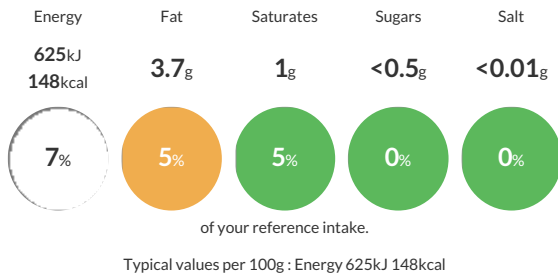
Short Product Name:  
Turkey Breast

Turkey Breast - Boneless and Skin On.

Traded Unit GTIN:  Internal GTIN:  Supplier: **Reids Of Norwich Ltd** Suppliers Product Code: **TKLOB082250F0000NI**

### Reference Intake

Each 100g portion contains:



### Nutritional Information

Typical Values	Per 100g
Energy	625kJ 148kCal
Carbohydrates	<0.5g
of which sugars	<0.5g
Fat	3.7g
of which saturates	1g
Fibre	<0.5g
Protein	28.7g
Salt	<0.01g

### Allergy Information

Key: **Contains** **May Contain**



### Dietary Information

Key: **Suitable for**



### Ingredients

Turkey