

The information on the [Erudus System](#) has been supplied by the manufacturers of the products and, whilst the owners of the Erudus System take steps to ensure the information is regularly updated, they give no warranty and no guarantee that the information is accurate. Product information and ingredients may change, please always read product labels carefully in addition to using the information provided by Erudus One.

We do not accept liability for any inaccuracies or incorrect information contained on this site. Please visit <http://www.erudus.com/terms-and-conditions> for full terms and conditions.

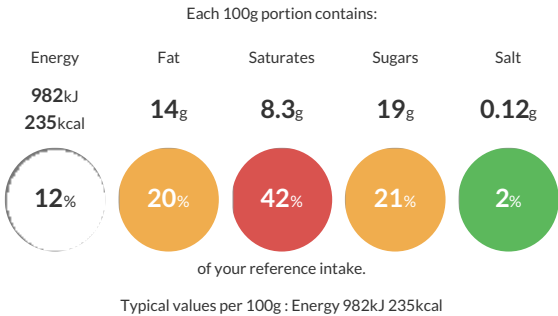
# Marshfield Farm Vanilla Clotted Cream Ice Cream 125ml

Short Product Name:  
Marshfield Farm Vanilla Clotted Cream Ice Cream

Vanilla Dairy Ice Cream made with Clotted Cream with Vanilla.

Traded Unit GTIN: 5060012792619 Internal GTIN: 5060012792626 Supplier : Marshfield Farm Ice Cream Ltd. Suppliers Product Code : MCVAN100

## Reference Intake



## Nutritional Information

Typical Values	Per 100g
Energy	982kJ 235kCal
Carbohydrates	23g
of which sugars	19g
Fat	14g
of which saturates	8.3g
Fibre	0.1g
Protein	4.4g
Salt	0.12g

## Allergy Information

Key: Contains May Contain

  
Does Not Contain Cereal/Gluten

  
Contains Milk

  
Does Not Contain Eggs

  
May Contain Peanuts

  
May Contain Nuts

  
Does Not Contain Crustaceans

  
Does Not Contain Mustard

  
Does Not Contain Fish

  
Does Not Contain Lupin

  
Does Not Contain Sesame

  
Does Not Contain Celery

  
Does Not Contain Soya

  
Does Not Contain Molluscs

  
Does Not Contain Sulphur Dioxide

Gluten Claim  
Gluten content is less than 20ppm.

Allergen Statement  
Contain milk  
Our suppliers cannot guarantee that their ingredients are free from traces of nuts

## Ingredients

Fresh MILK (55%), sugar, double cream (MILK) (11%), clotted cream (MILK) (10%), MILK solids, butter (MILK), glycerine, emulsifier (mono and di-glycerides of fatty acids), stabilisers (locust bean gum, guar gum, carrageenan), natural vanilla flavourings, vanilla bean seeds (0.1%), natural colours (curcumin, annatto).