

Supplier's Product Code :  
 Product Added :  
 Last Updated by Supplier :  
 erudus id :

012148P  
 10 April 2024  
 11 April 2024  
 c9840f0502564cf3b415954ca9556e0e



The information on the Erudus System has been supplied by the manufacturers of the products and, whilst the owners of the Erudus System take steps to ensure the information is regularly updated, they give no warranty and no guarantee that the information is accurate. Product information and ingredients may change, please always read product labels carefully in addition to using the information provided by Erudus One.

We do not accept liability for any inaccuracies or incorrect information contained on this site. Please visit <http://www.erudus.com/terms-and-conditions> for full terms and conditions.

## Purple Pineapple Low Fat Sweet Chilli Chicken 1kg

Short Product Name:

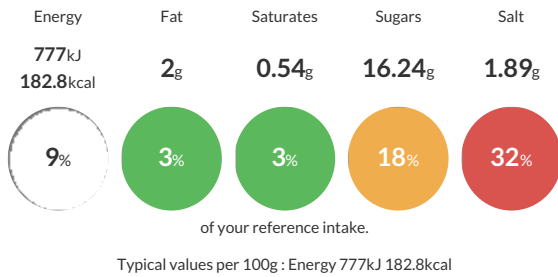
Low Fat Sweet Chilli Chicken

Sliced chicken in a sweet chilli style sauce

Traded Unit GTIN:  Internal GTIN:  Supplier:  Suppliers Product Code:

### Reference Intake

Each 100g portion contains:



### Nutritional Information

Typical Values	Per 100g
Energy	777kJ 182.8kCal
Carbohydrates	18.94g
of which sugars	16.24g
Fat	2g
of which saturates	0.54g
Fibre	-g
Protein	22.05g
Salt	1.89g

### Allergy Information

Key: Contains May Contain

Does Not Contain Cereal/Gluten	Does Not Contain Milk	Does Not Contain Eggs	Does Not Contain Peanuts	Does Not Contain Nuts	Does Not Contain Crustaceans	Does Not Contain Mustard
Does Not Contain Fish	Does Not Contain Lupin	Does Not Contain Sesame	Does Not Contain Celery	Does Not Contain Soya	Does Not Contain Molluscs	Does Not Contain Sulphur Dioxide

### Dietary Information

Key: Suitable for

May not be suitable for Vegetarian	May not be suitable for Vegan	May not be suitable for Kosher	May not be suitable for Halal	NO DATA for Coeliac
------------------------------------	-------------------------------	--------------------------------	-------------------------------	---------------------

### Ingredients

Roasted Sliced Chicken (Foodfellas) 60% (Chicken breast, Rice Starch, salt, Dextrose, D-Xylose, Maltodextrin, Stabilisers (Sodium Bicarbonate, Sodium Citrates)), Chilli Sauce 30% (Water, sugar, spirit vinegar, tomato paste, golden syrup, thickener [E1422 modified starch], salt, red pepper flake, onion kibbled, spice [cayenne, ginger], garlic, herb [coriander], paprika [E160c]) Thai Sweet Chilli Sauce 10% (glucose-Fructose Syrup, Sugar, Water, Spirit Vinegar, Modified Starch, Garlic Puree (Water, Dried Garlic, Acidity Regulator (Citric Acid)), Salt, Dried Garlic, Birds Eye Chillies, Dried Red Pepper, Crushed Chilli, Preservative (Potassium Sorbate).