

Supplier's Product Code :
 Product Added :
 Last Updated by Supplier :
 erudus id :

HC526/CFHC526
 21 August 2015
 19 April 2021
 ca9ff9076f364929a563fb7e0eac5a75



The information on the Erudus System has been supplied by the manufacturers of the products and, whilst the owners of the Erudus System take steps to ensure the information is regularly updated, they give no warranty and no guarantee that the information is accurate. Product information and ingredients may change, please always read product labels carefully in addition to using the information provided by Erudus One.

We do not accept liability for any inaccuracies or incorrect information contained on this site. Please visit <http://www.erudus.com/terms-and-conditions> for full terms and conditions.

15" x 9" Cheese & Tomato Slab Pizza - with added Wholemeal (x 6)

Short Product Name:

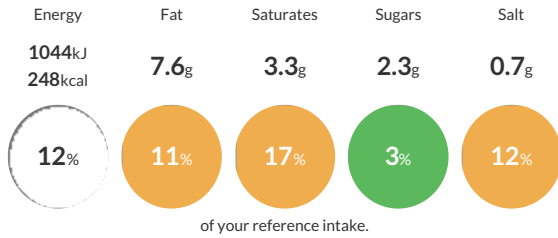
Cheese & Tomato Slab Pizza - with added Wholemeal

Pizza Slab 15"x 9" made of Wheat flour with 25% Wholemeal flour, seasoned with tomato sauce and topped with a blend of shredded Mozzarella and Cheddar cheeses. Individually flow-wrapped in clear polypropylene.

Traded Unit GTIN: 05060286060247 Internal GTIN: Supplier: Capri Foods Ltd Suppliers Product Code: HC526/CFHC526

Reference Intake

Each 100g portion contains:



Typical values per 100g : Energy 1044kJ 248kcal

Nutritional Information

Typical Values	Per 100g
Energy	1044kJ 248kCal
Carbohydrates	33.5g
of which sugars	2.3g
Fat	7.6g
of which saturates	3.3g
Fibre	2.5g
Protein	10.5g
Salt	0.7g

Allergy Information

Key: Contains May Contain



Dietary Information

Key: Suitable for



Ingredients

WHEAT Flour (29%) (**WHEAT** Flour, Calcium Carbonate, Iron, Niacin, Thiamine), Cheese (21%)[Mozzarella, Cheddar](**MILK**), Tomato Sauce (16%) [Water, Tomato Powder, Stabilizer: Modified Potato Starch, Sugar, Salt, Dried Oregano, Garlic Powder, Onion Powder, Colour: Paprika Extract, Rapeseed Oil], Water, Wholemeal Flour (10%) (**WHEAT**), Pre-mix [**WHEAT** Flour (**WHEAT** Flour, Calcium Carbonate, Niacin, Iron, Thiamine), Sugar, Potassium Chloride, Salt, Emulsifier: Diacetyltartaric Acid Esters of Mono- and Diglycerides (Rapeseed), Flour Treatment Agent: Ascorbic Acid], Rapeseed Oil, Yeast.