

Supplier's Product Code :
Product Added :
Last Updated by Supplier :
erudus id :

12296065
04 March 2020
21 October 2021
cd729adca92643829b8501cb581f08bf



The information on the [Erudus System](#) has been supplied by the manufacturers of the products and, whilst the owners of the Erudus System take steps to ensure the information is regularly updated, they give no warranty and no guarantee that the information is accurate. Product information and ingredients may change, please always read product labels carefully in addition to using the information provided by Erudus One.

We do not accept liability for any inaccuracies or incorrect information contained on this site. Please visit <http://www.erudus.com/terms-and-conditions> for full terms and conditions.

MILKYBAR Medium Bar 40x25g

Short Product Name:

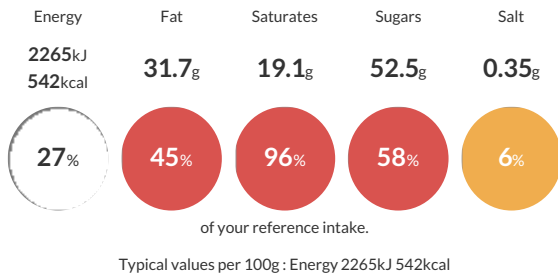
Milkybar White Chocolate Medium Bar 25g

White chocolate

Traded Unit GTIN: **7613032324674** Internal GTIN: **50426188** Supplier: **Nestle UK** Suppliers Product Code: **12296065**

Reference Intake

Each 100g portion contains:



Nutritional Information

Typical Values	Per 100g
Energy	2265kJ 542kCal
Carbohydrates	52.9g
of which sugars	52.5g
Fat	31.7g
of which saturates	19.1g
Fibre	0g
Protein	10.8g
Salt	0.35g

Allergy Information

Key: **Contains** **May Contain**



Allergen Statement
May contain gluten.

Ingredients

MILK powders (Whole and skimmed) (37.5%), Sugar, Cocoa butter, Vegetable fat (Mango kernel/ Palm/ Sal/ Shea), Emulsifier (Sunflower lecithin), Natural flavouring.

Dietary Information

Key: **Suitable for**

