

Supplier's Product Code :
Product Added :
Last Updated by Supplier :
erudus id :

410126
18 March 2019
14 October 2022
ce128da9c25445ac8f07a62d3964fbb2



The information on the Erudus System has been supplied by the manufacturers of the products and, whilst the owners of the Erudus System take steps to ensure the information is regularly updated, they give no warranty and no guarantee that the information is accurate. Product information and ingredients may change, please always read product labels carefully in addition to using the information provided by Erudus One.

We do not accept liability for any inaccuracies or incorrect information contained on this site. Please visit <http://www.erudus.com/terms-and-conditions> for full terms and conditions.

TATE & LYLE GRAN SUGAR 25KG PAPER SACK

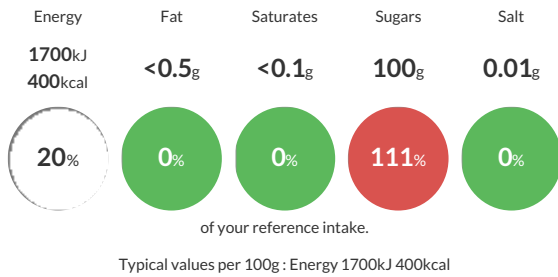
Short Product Name:

A free flowing white crystalline sugar that is refined from raw cane sugar. This sugar is manufactured under Global Food Safety Initiative Standards and complies with the latest European Pharmacopoeia (EP), Japanese Pharmacopoeia (JP) and United States Pharmacopoeia (USP) monographs, but is not Pharmacopoeia certified.*

Traded Unit GTIN: - Internal GTIN: 05010115020027 Supplier: Tate & Lyle Sugars Suppliers Product Code: 410126

Reference Intake

Each 100g portion contains:



Nutritional Information

Typical Values	Per 100g
Energy	1700kJ 400kCal
Carbohydrates	100g
of which sugars	100g
Fat	<0.5g
of which saturates	<0.1g
Fibre	-g
Protein	<0.5g
Salt	0.01g

Allergy Information

Key: **Contains** **May Contain**



Allergen Statement

Allergen Status: This product is Allergen free as defined by European Regulation (EU) 1169/2011 and European Commission Regulation (EC) 41/2009 (Gluten ≤ 20ppm).

Ingredients

White sugar or sugar (100%)

Dietary Information

Key: **Suitable for**

