

Supplier's Product Code :  
Product Added :  
Last Updated by Supplier :  
erudus id :

012344P  
11 April 2024  
12 April 2024  
ceb558bdbca84f9db00c84449019b247



The information on the Erudus System has been supplied by the manufacturers of the products and, whilst the owners of the Erudus System take steps to ensure the information is regularly updated, they give no warranty and no guarantee that the information is accurate. Product information and ingredients may change, please always read product labels carefully in addition to using the information provided by Erudus One.

We do not accept liability for any inaccuracies or incorrect information contained on this site. Please visit <http://www.erudus.com/terms-and-conditions> for full terms and conditions.

## Purple Pineapple Sliced Chicken with Salsa Sauce 2.5kg

Short Product Name:

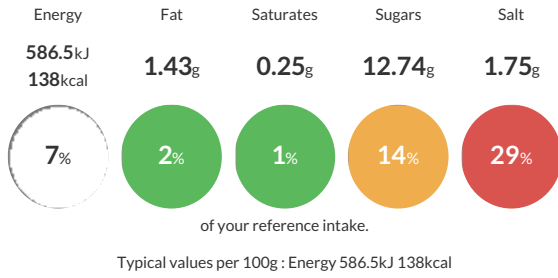
Sliced Chicken with Salsa Sauce

Roast pepper salsa with sliced chicken, red kidney beans and sweetcorn

Traded Unit GTIN:  Internal GTIN:  Supplier:  Suppliers Product Code:

### Reference Intake

Each 100g portion contains:



### Nutritional Information

Typical Values	Per 100g
Energy	586.5kJ 138kCal
Carbohydrates	18.35g
of which sugars	12.74g
Fat	1.43g
of which saturates	0.25g
Fibre	1.75g
Protein	12.38g
Salt	1.75g

### Allergy Information

Key: Contains May Contain



### Dietary Information

Key: Suitable for



### Ingredients

Roast Pepper Salsa 50% (Water, glucose syrup solids, roast peppers, spirit vinegar, tomato paste, onion powder, thickener E1422 modified starch, molasses, red pepper flake, salt, garlic powder, rapeseed oil, herb coriander, spice cayenne), Roasted Sliced Chicken (Foodfellas) 30% (Chicken breast, Rice Starch, Salt, Dextrose, D-Xylose, Maltodextrin, Stabilisers (Sodium Bicarbonate, Sodium Citrates)), Red Kidney Beans 10% (Red kidney beans, water, salt), Sweetcorn 10% (Sweetcorn, water, salt, citric acid).