

Supplier's Product Code :
Product Added :
Last Updated by Supplier :
erudus id :

4056734
30 October 2024
30 October 2024
cf551b4af7fe4b11b5e4dc301d95bb04



The information on the Erudus System has been supplied by the manufacturers of the products and, whilst the owners of the Erudus System take steps to ensure the information is regularly updated, they give no warranty and no guarantee that the information is accurate. Product information and ingredients may change, please always read product labels carefully in addition to using the information provided by Erudus One.

We do not accept liability for any inaccuracies or incorrect information contained on this site. Please visit <http://www.erudus.com/terms-and-conditions> for full terms and conditions.

Frozen Gressingham Traditional Duck Leg Confit 280g+ x1x18

Short Product Name:

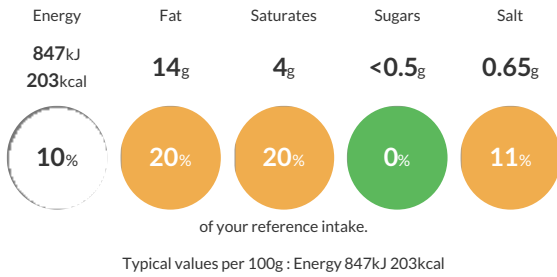
Frozen Gressingham Traditional Duck Leg Confit 280g+ x1x18

Birds are slaughtered and eviscerated in an approved slaughterhouse. Birds are to be class A and free from excessive feathers and debris. Ducks are portioned and legs are weight graded. Legs are tumbled with dry confit seasoning addition. Marinated legs are vacuum packed x1 and sent to cookhouse. Cooked legs received frozen are then labelled, metal detected and packed in a box. Lid is placed, case end label applied, boxes are palletized and stored frozen.

Traded Unit GTIN: 05016157537264 Internal GTIN: Supplier: Gressingham Foods Suppliers Product Code: 4056734

Reference Intake

Each 100g portion contains:



Nutritional Information

Typical Values	Per 100g
Energy	847kJ 203kCal
Carbohydrates	<0.5g
of which sugars	<0.5g
Fat	14g
of which saturates	4g
Fibre	0.5g
Protein	19g
Salt	0.65g

Allergy Information

Key: Contains May Contain



Dietary Information

Key: Suitable for



Ingredients

Duck (99%), Confit Seasoning (Salt, Garlic, Thyme, Rosemary, Cornflour, Black Pepper)