

Supplier's Product Code :
Product Added :
Last Updated by Supplier :
erudus id :

1012607
11 July 2024
11 July 2024
d019ec035dc0459ca9584a80046d099a



The information on the Erudus System has been supplied by the manufacturers of the products and, whilst the owners of the Erudus System take steps to ensure the information is regularly updated, they give no warranty and no guarantee that the information is accurate. Product information and ingredients may change, please always read product labels carefully in addition to using the information provided by Erudus One.

We do not accept liability for any inaccuracies or incorrect information contained on this site. Please visit <http://www.erudus.com/terms-and-conditions> for full terms and conditions.

Sharwood's Plain Poppadoms 2kg

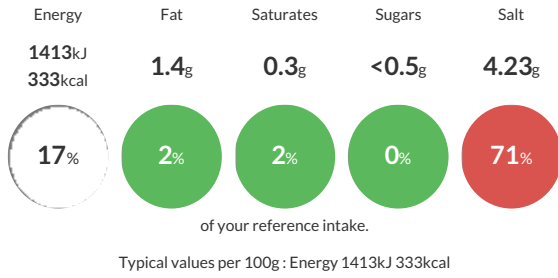
Short Product Name:
Poppadoms

Cook to eat plain poppadoms.

Traded Unit GTIN: 5000354912078 Internal GTIN: 5000354912078 Supplier: Premier Foods Suppliers Product Code: 1012607

Reference Intake

Each 100g portion contains:



Nutritional Information

Typical Values	Per 100g
Energy	1413kJ 333kCal
Carbohydrates	58.3g
of which sugars	<0.5g
Fat	1.4g
of which saturates	0.3g
Fibre	1.4g
Protein	21.1g
Salt	4.23g

Allergy Information

Key: Contains May Contain

May Contain Cereal/Gluten	Does Not Contain Milk	Does Not Contain Eggs	Does Not Contain Peanuts	Does Not Contain Nuts	Does Not Contain Crustaceans	Does Not Contain Mustard
Does Not Contain Fish	Does Not Contain Lupin	Does Not Contain Sesame	Does Not Contain Celery	Does Not Contain Soya	Does Not Contain Molluscs	Does Not Contain Sulphur Dioxide

Allergen Statement

Allergy Advice: May contain wheat (gluten).

Ingredients

Black Chickpea Gram Flour, Water, Salt, Raising Agent: Calcium Oxide; Rice Flour, Sunflower Oil.

Dietary Information

Key: Suitable for

Suitable for Vegetarian	May not be suitable for Vegan	May not be suitable for Kosher	May not be suitable for Halal	NO DATA for Coeliac
-------------------------	-------------------------------	--------------------------------	-------------------------------	---------------------