

Supplier's Product Code :
Product Added :
Last Updated by Supplier :
erudus id :

F02323
27 November 2020
28 February 2023
d068afcebc6949868b435c827757291



The information on the Erudus System has been supplied by the manufacturers of the products and, whilst the owners of the Erudus System take steps to ensure the information is regularly updated, they give no warranty and no guarantee that the information is accurate. Product information and ingredients may change, please always read product labels carefully in addition to using the information provided by Erudus One.

We do not accept liability for any inaccuracies or incorrect information contained on this site. Please visit <http://www.erudus.com/terms-and-conditions> for full terms and conditions.

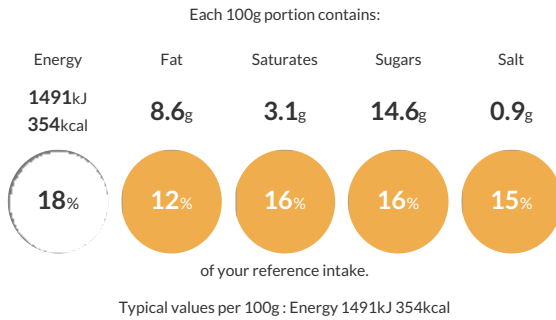
Kara Giant Sultana Scone 12 x 5

Short Product Name:

A fully baked hexagonal shaped English white scone with an egg glazed top and an even distribution of sultanas throughout the crumb

Traded Unit GTIN: **05051788123233** Internal GTIN: Supplier : **Kara Foodservice (Fletchers)** Suppliers Product Code : **F02323**

Reference Intake



Nutritional Information

Typical Values	Per 100g
Energy	1491kJ 354kCal
Carbohydrates	60.5g
of which sugars	14.6g
Fat	8.6g
of which saturates	3.1g
Fibre	3.2g
Protein	7g
Salt	0.9g

Allergy Information

Key: **Contains** **May Contain**



Allergen Statement

For allergens (including cereals containing gluten), see ingredients in bold.

Ingredients

Wheat Flour [**WHEAT** Flour, Calcium Carbonate, Iron, Niacin, Thiamin], Water, Sugar, Sultanas (10%), Palm Oil, Rapeseed Oil, Whey Powder (**MILK**), Raising Agents (Disodium Diphosphate, Sodium Bicarbonate), Pasteurised **EGG**, Preservative (Potassium Sorbate), Emulsifier (Mono- and Di-Glycerides of Fatty Acids).

Dietary Information

Key: **Suitable for**

