

Supplier's Product Code :
 Product Added :
 Last Updated by Supplier :
 erudus id :

10851 -PPANI
 02 November 2007
 27 January 2022
 d12b1649e62e4ed69f2b554b53902918



The information on the **Erudus System** has been supplied by the manufacturers of the products and, whilst the owners of the Erudus System take steps to ensure the information is regularly updated, they give no warranty and no guarantee that the information is accurate. Product information and ingredients may change, please always read product labels carefully in addition to using the information provided by Erudus One.

We do not accept liability for any inaccuracies or incorrect information contained on this site. Please visit <http://www.erudus.com/terms-and-conditions> for full terms and conditions.

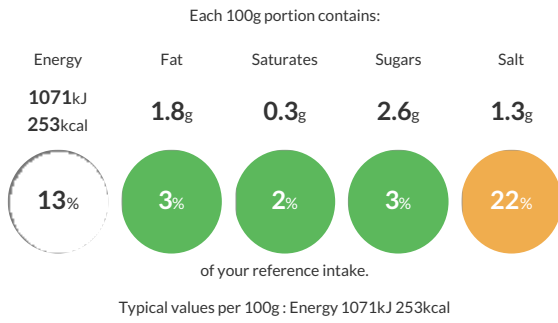
60 PANINI 110G

Short Product Name:
 PANINI

NA

Traded Unit GTIN: **3516870108519** Internal GTIN: Supplier: **Planète Pain** Suppliers Product Code: **10851-PPANI**

Reference Intake



Nutritional Information

Typical Values	Per 100g
Energy	1071kJ 253kCal
Carbohydrates	51.7g
of which sugars	2.6g
Fat	1.8g
of which saturates	0.3g
Fibre	-g
Protein	7.4g
Salt	1.3g

Allergy Information

Key: **Contains** **May Contain**

Contains Cereal/Gluten	Does Not Contain Milk	May Contain Eggs	Does Not Contain Peanuts	Does Not Contain Nuts	Does Not Contain Crustaceans	Does Not Contain Mustard
Does Not Contain Fish	Does Not Contain Lupin	May Contain Sesame	Does Not Contain Celery	Does Not Contain Soya	Does Not Contain Molluscs	Does Not Contain Sulphur Dioxide

Dietary Information

Key: **Suitable for**

Suitable for Vegetarian	Suitable for Vegan	May not be suitable for Kosher	May not be suitable for Halal	May not be suitable for Coeliac
-------------------------	--------------------	--------------------------------	-------------------------------	---------------------------------

Ingredients

WHEAT flour, water, yeast, salt, olive oil, **WHEAT GLUTEN**, malted **WHEAT FLOUR**, enzymes, flour treatment agent : E 300.