

Supplier's Product Code :
Product Added :
Last Updated by Supplier :
erudus id :

010105
27 February 2013
29 June 2023
d2a2a8532b0b4995ac958789278cbabf



The information on the **Erudus System** has been supplied by the manufacturers of the products and, whilst the owners of the Erudus System take steps to ensure the information is regularly updated, they give no warranty and no guarantee that the information is accurate. Product information and ingredients may change, please always read product labels carefully in addition to using the information provided by Erudus One.

We do not accept liability for any inaccuracies or incorrect information contained on this site. Please visit <http://www.erudus.com/terms-and-conditions> for full terms and conditions.

Blue Dragon extra firm silken tofu 12x349g

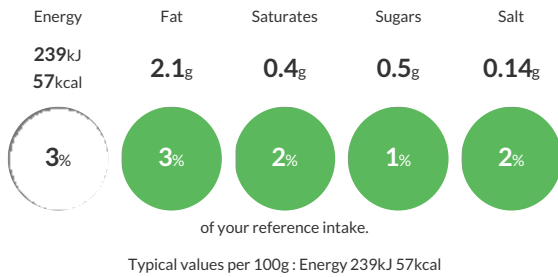
Short Product Name:
extra firm silken tofu

Extra firm silken tofu

Traded Unit GTIN: **05015612011059** Internal GTIN: **5010338011031** Supplier: **AB World** Suppliers Product Code: **010105**

Reference Intake

Each 100g portion contains:



Nutritional Information

Typical Values	Per 100g
Energy	239kJ 57kCal
Carbohydrates	1.9g
of which sugars	0.5g
Fat	2.1g
of which saturates	0.4g
Fibre	1.7g
Protein	7.6g
Salt	0.14g

Allergy Information

Key: **Contains** **May Contain**



Gluten Claim

Gluten content is less than 20ppm.

Allergen Statement

For allergens, see ingredients in bold.

Ingredients

Water, **SOYA Beans (7%)**, **Isolated SOYA Protein (5%)**, Firming Agent (Glucono-Delta-Lactone, Calcium Chloride).

Dietary Information

Key: **Suitable for**

