

Supplier's Product Code :
 Product Added :
 Last Updated by Supplier :
 erudus id :

LM12FR6P25
 23 August 2021
 15 September 2023
 d3ef5fe4e0dd4b1ebce052336cf07753



The information on the **Erudus System** has been supplied by the manufacturers of the products and, whilst the owners of the Erudus System take steps to ensure the information is regularly updated, they give no warranty and no guarantee that the information is accurate. Product information and ingredients may change, please always read product labels carefully in addition to using the information provided by Erudus One.

We do not accept liability for any inaccuracies or incorrect information contained on this site. Please visit <http://www.erudus.com/terms-and-conditions> for full terms and conditions.

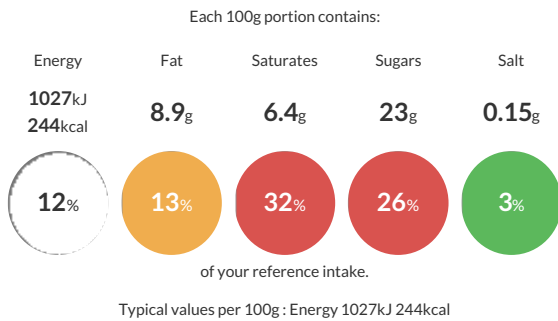
Little Moons Coconut Ice Cream Mochi 6x32g

With a mouthful of creamy gelato, lovingly wrapped in soft and delightfully delicate mochi dough, each bite of mochi serves up an exciting new flavour adventure. Enjoy the taste of tropical paradise with smooth, creamy coconut, and welcome a whole new world of flavour into your home. The higher density of our gelato means it's not as soft straight out the freezer but results in a more intense flavour with patience. Enjoy the little things. Great taste - 2017, Bite sized adventures, 78 joyful calories per ball, Delightfully dreamy, No artificial flavourings, colours or preservatives, Dietary gluten free, Suitable for vegetarians.

Ingredients: Whole MILK, sugar, water, rice flour, double cream (MILK), desiccated coconut (7%), trehalose*, skimmed MILK powder, tapioca starch, emulsifier (mono and diglycerides of fatty acids), stabilisers (guar gum, locust bean gum, cellulose gum, carrageenan), salt, SOYA. Allergen Information: May Contain Eggs, Contains Milk, May Contain Nuts, May Contain Peanuts, May Contain Sesame, Contains Soya Allergy Information: May also contain Nuts, Peanuts, Sesame, and Egg. Dietary Information: Suitable for Vegetarians; Gluten free

Traded Unit GTIN: **05027324001358** Internal GTIN: **5027324001198** Supplier: **Little Moons** Suppliers Product Code : **LM12FR6P25**

Reference Intake



Nutritional Information

Typical Values	Per 100g
Energy	1027kJ 244kCal
Carbohydrates	37g
of which sugars	23g
Fat	8.9g
of which saturates	6.4g
Fibre	-g
Protein	3.1g
Salt	0.15g

Allergy Information

Key: **Contains** **May Contain**

Does Not Contain Cereal/Gluten	Contains Milk	May Contain Eggs	May Contain Peanuts	May Contain Nuts	Does Not Contain Crustaceans	Does Not Contain Mustard
Does Not Contain Fish	Does Not Contain Lupin	Does Not Contain Sesame	Does Not Contain Celery	Contains Soya	Does Not Contain Molluscs	Does Not Contain Sulphur Dioxide

Dietary Information

Key: **Suitable for**

Suitable for Vegetarian	May not be suitable for Vegan	May not be suitable for Kosher	May not be suitable for Halal	Suitable for Coeliac
-------------------------	-------------------------------	--------------------------------	-------------------------------	----------------------

Gluten Claim

Gluten content is less than 20ppm.

Ingredients

Whole MILK, sugar, water, rice flour, double cream (MILK), desiccated coconut (7%), trehalose*, skimmed MILK powder, tapioca starch, emulsifier (mono and diglycerides of fatty acids), stabilisers (guar gum, locust bean gum, cellulose gum, carrageenan), salt, SOYA.