

Supplier's Product Code :  
Product Added :  
Last Updated by Supplier :  
erudus id :

GRMI10  
20 December 2024  
20 December 2024  
d433b043c98247ceac54af2daa181c1e



The information on the **Erudus System** has been supplied by the manufacturers of the products and, whilst the owners of the Erudus System take steps to ensure the information is regularly updated, they give no warranty and no guarantee that the information is accurate. Product information and ingredients may change, please always read product labels carefully in addition to using the information provided by Erudus One.

We do not accept liability for any inaccuracies or incorrect information contained on this site. Please visit <http://www.erudus.com/terms-and-conditions> for full terms and conditions.

## GRAVY MIX ORIGINAL (TUBS) 4x2.5kg

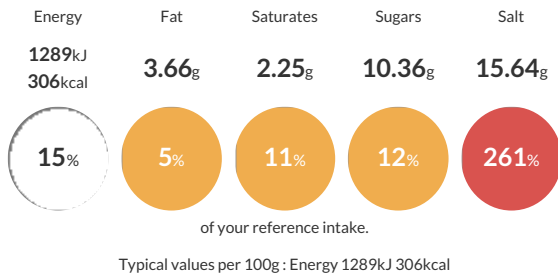
Short Product Name:  
Gravy Mix

A dry blend consisting of starches, salt, flavour and colour components, which, on reconstitution as directed, will produce a brown gravy suitable for use with roast or grilled meats, or in stews and casseroles.

Traded Unit GTIN: **05020933027054** Internal GTIN: **5020933060457** Supplier : **Sleaford Quality Foods** Suppliers Product Code : **GRMI10**

### Reference Intake

Each 100g portion contains:



### Nutritional Information

Typical Values	Per 100g
Energy	1289kJ 306kCal
Carbohydrates	65.68g
of which sugars	10.36g
Fat	3.66g
of which saturates	2.25g
Fibre	1.58g
Protein	7.14g
Salt	15.64g

### Allergy Information

Key: **Contains** **May Contain**



### Dietary Information

Key: **Suitable for**



### Ingredients

WHEAT Flour(WHEAT Flour, Calcium Carbonate, Niacin, Iron, Thiamin), Maize Starch, Salt, Sugar, Flavour Enhancer Monosodium Glutamate, Hydrolysed Vegetable Protein(SOYA, Maize), Colour E150c, Onion, Palm Oil Fractions, Yeast Extract, Flavouring, Acidity Regulator: Citric Acid, Spice Extract.