

Supplier's Product Code :
Product Added :
Last Updated by Supplier :
erudus id :

FDCAN07
26 February 2020
19 September 2024
d4931d20d3b14d828cac24c468d47fee



The information on the **Erudus System** has been supplied by the manufacturers of the products and, whilst the owners of the Erudus System take steps to ensure the information is regularly updated, they give no warranty and no guarantee that the information is accurate. Product information and ingredients may change, please always read product labels carefully in addition to using the information provided by Erudus One.

We do not accept liability for any inaccuracies or incorrect information contained on this site. Please visit <http://www.erudus.com/terms-and-conditions> for full terms and conditions.

Smkd Salm Crm Chse Bagels 22g (1 x 45)

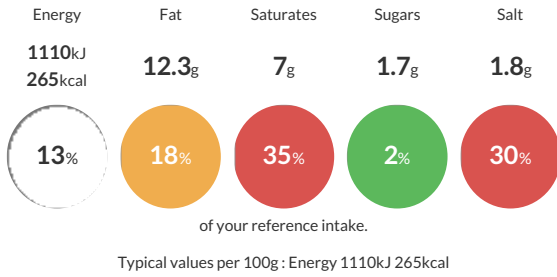
Short Product Name:

Delicious mini bagels, generously filled with cream cheese and a roll of smoked salmon. (1 x 45)

Traded Unit GTIN: **5060089681106** Internal GTIN: Supplier: **Central Foods Group Ltd** Suppliers Product Code: **FDCAN07**

Reference Intake

Each 100g portion contains:



Nutritional Information

| Typical Values | Per 100g |
|--------------------|-------------------|
| Energy | 1110kJ 265kCal |
| Carbohydrates | 26.7g |
| of which sugars | 1.7g |
| Fat | 12.3g |
| of which saturates | 7g |
| Fibre | 0.8g |
| Protein | 11.8g |
| Salt | 1.8g |

Allergy Information

Key: **Contains** **May Contain**



Dietary Information

Key: **Suitable for**



Allergen Statement

For allergens, including cereals containing gluten, see ingredients in **CAPITALS**.

Ingredients

Bagel (**WHEAT** Flour (**WHEAT** Flour, Calcium Carbonate, Iron, Niacin, Thiamine), Water, Yeast, Dextrose, Salt, Rapeseed Oil, **SOYA** Flour, Emulsifiers (Sodium Stearoyl-2-Lactylate, Mono- and Diacetyl tartaric Acid Esters of Mono- and Diglycerides of Fatty Acids, Mono- and Diglycerides of Fatty Acids), Flour Treatment Agent (Ascorbic Acid, L-Cysteine)), Smoked Salmon (**FISH**) (25%), Cream Cheese (14%) (**MILK**) (Cream, Skimmed **MILK**, **MILK** Solids, Modified Starch, Salt, Preservative (Potassium Sorbate), Culture), Double Cream (**MILK**), Lemon Juice, Chives.