

Supplier's Product Code :  
Product Added :  
Last Updated by Supplier :  
erudus id :

8173  
05 November 2024  
05 November 2024  
d4f76321eced486b8119c7d80443fec7



The information on the **Erudus System** has been supplied by the manufacturers of the products and, whilst the owners of the Erudus System take steps to ensure the information is regularly updated, they give no warranty and no guarantee that the information is accurate. Product information and ingredients may change, please always read product labels carefully in addition to using the information provided by Erudus One.

We do not accept liability for any inaccuracies or incorrect information contained on this site. Please visit <http://www.erudus.com/terms-and-conditions> for full terms and conditions.

## Kingsmill Professional Great White Bloomer 700g

Short Product Name:

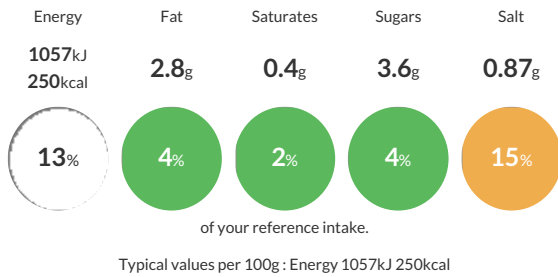
White Bread with Sourdough

White Bread with Sourdough

Traded Unit GTIN: **05010092808816** Internal GTIN: **5010092817313** Supplier: **Allied Bakeries** Suppliers Product Code: **8173**

### Reference Intake

Each 100g portion contains:



### Nutritional Information

Typical Values	Per 100g
Energy	1057kJ 250kCal
Carbohydrates	45.7g
of which sugars	3.6g
Fat	2.8g
of which saturates	0.4g
Fibre	3.2g
Protein	8.9g
Salt	0.87g

### Allergy Information

Key: **Contains** **May Contain**



### Allergen Statement

n/a

### Ingredients

WHEAT Flour (with calcium, iron, niacin (B3) and thiamin (B1)), Water, Yeast, WHEAT and RYE Sourdough (1.5%), WHEAT Protein, Fermented WHEAT Flour, Salt, WHEAT Fibre, Vinegar, Sustainable SOYA Flour, Vegetable Oils (Rapeseed, Sustainable Palm), Dried Malted WHEAT Sourdough, WHEAT Semolina, WHEAT Starch, Flour Treatment Agent: Ascorbic Acid (Vitamin C).

### Dietary Information

Key: **Suitable for**

