

Supplier's Product Code :
Product Added :
Last Updated by Supplier :
erudus id :

012105P
10 April 2024
11 April 2024
d514ad3f9169478aa57e4d60edff1ba8



The information on the [Erudus System](#) has been supplied by the manufacturers of the products and, whilst the owners of the Erudus System take steps to ensure the information is regularly updated, they give no warranty and no guarantee that the information is accurate. Product information and ingredients may change, please always read product labels carefully in addition to using the information provided by Erudus One.

We do not accept liability for any inaccuracies or incorrect information contained on this site. Please visit <http://www.erudus.com/terms-and-conditions> for full terms and conditions.

Purple Pineapple Sliced Chicken Tikka 1kg

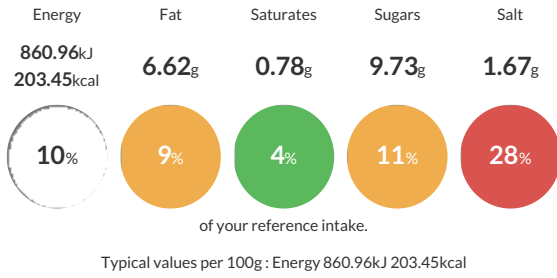
Short Product Name:
Sliced Chicken Tikka

Sliced chicken coated in a mild curry sauce

Traded Unit GTIN: Internal GTIN: Supplier: Suppliers Product Code:

Reference Intake

Each 100g portion contains:



Nutritional Information

Typical Values	Per 100g
Energy	860.96kJ 203.45kCal
Carbohydrates	13.31g
of which sugars	9.73g
Fat	6.62g
of which saturates	0.78g
Fibre	-g
Protein	22.29g
Salt	1.67g

Allergy Information

Key: Contains May Contain



Dietary Information

Key: Suitable for



Ingredients

Roasted Sliced Chicken (Foodfellas) 60% (Chicken breast, Rice Starch, Salt, Dextrose, D-Xylose, Maltodextrin, Stabilisers (Sodium Bicarbonate, Sodium Citrates), Tikka Sauce 34% (Water, Glucose Syrup Solids, Spirit Vinegar, Thickener (E1422 Modified Starch), Tomato Paste, Rapeseed Oil, Spice (Cayenne, Coriander, Cumin), Salt, Milk Powder, Lemon Juice Concentrate, Herb (Mint, Parsley), Garlic, Paprika (E160c)) (MILK) Free Range Real Mayonnaise 5.5 % (Rapeseed Oil, Water, Sugar, Stabiliser: Modified Maize Starch (E1422)). Preservative: Acetic Acid (E260). Pasteurised Free Range Egg Yolk Powder, Stabiliser: Xanthan Gum (E415). Salt, Preservative: Potassium Sorbate (E202), Lutein (E161b) (EGGS) Mint 0.5% (Dried Mint).