

Supplier's Product Code :  
Product Added :  
Last Updated by Supplier :  
erudus id :

F02476  
28 March 2023  
12 May 2023  
d7934d90bcde4b7c9ef1df07b582dcf6



The information on the **Erudus System** has been supplied by the manufacturers of the products and, whilst the owners of the Erudus System take steps to ensure the information is regularly updated, they give no warranty and no guarantee that the information is accurate. Product information and ingredients may change, please always read product labels carefully in addition to using the information provided by Erudus One.

We do not accept liability for any inaccuracies or incorrect information contained on this site. Please visit <http://www.erudus.com/terms-and-conditions> for full terms and conditions.

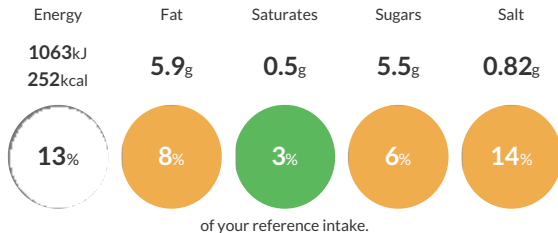
## Genius Soft White Farmhouse 6 x 430g

Gluten free white farmhouse sliced loaf

Traded Unit GTIN: **5060746960575** Internal GTIN: **5060746960506** Supplier: **Kara Foodservice (Fletchers)** Suppliers Product Code: **F02476**

### Reference Intake

Each 100g portion contains:



Typical values per 100g : Energy 1063kJ 252kcal

### Nutritional Information

Typical Values	Per 100g
Energy	1063kJ 252kCal
Carbohydrates	44.8g
of which sugars	5.5g
Fat	5.9g
of which saturates	0.5g
Fibre	6.2g
Protein	2g
Salt	0.82g

### Allergy Information

Key: **Contains** **May Contain**



#### Gluten Claim

Gluten content is less than 20ppm.

#### Allergen Statement

Contains: **EGG**

### Ingredients

Maize Starch, Potato Starch, Tapioca Starch, Water, Rapeseed Oil, Humectant (Vegetable Glycerol), Psyllium Husk Powder, Yeast, Stabilisers (Hydroxypropyl Methyl Cellulose, Xanthan Gum), Ground Golden Flaxseed, Free Range Dried **EGG** White, Rice Flour, Iodised Salt (Salt, Potassium Iodate), Dextrose, Fermented Maize Starch, Partially Inverted Sugar Syrup, Calcium Carbonate, Niacin, Iron, Riboflavin, Thiamine, Folic Acid.

### Dietary Information

Key: **Suitable for**

