

Supplier's Product Code :
Product Added :
Last Updated by Supplier :
erudus id :

SUBR1K
19 March 2025
19 March 2025
d94327e353a84957992f809f6126a8e5



The information on the Erudus System has been supplied by the manufacturers of the products and, whilst the owners of the Erudus System take steps to ensure the information is regularly updated, they give no warranty and no guarantee that the information is accurate. Product information and ingredients may change, please always read product labels carefully in addition to using the information provided by Erudus One.

We do not accept liability for any inaccuracies or incorrect information contained on this site. Please visit <http://www.erudus.com/terms-and-conditions> for full terms and conditions.

La Perruche Brown Rough Cut Lump Sugar 1kg

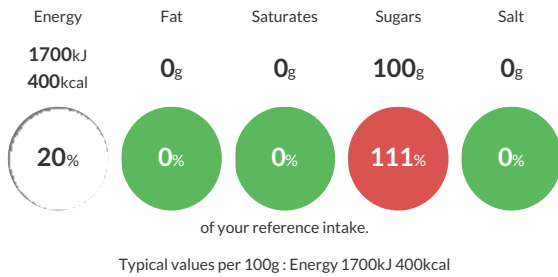
Short Product Name:
Brown Sugar

Brown Rough Cut Lump Sugar 1kg

Traded Unit GTIN: 3174660070998 | Internal GTIN: 3174660070981 | Supplier: Ivory & Ledoux Ltd | Suppliers Product Code: SUBR1K

Reference Intake

Each 100g portion contains:



Nutritional Information

Typical Values	Per 100g
Energy	1700kJ 400kCal
Carbohydrates	100g
of which sugars	100g
Fat	0g
of which saturates	0g
Fibre	0g
Protein	0g
Salt	0g

Allergy Information

Key: Contains May Contain



Dietary Information

Key: Suitable for



Ingredients

Cane Sugar (cane sugar, caramelised cane sugar)