

Supplier's Product Code :
Product Added :
Last Updated by Supplier :
erudus id :

4258175
16 January 2025
16 January 2025
d959751c7f6247ccb438c700cab49214



The information on the **Erudus System** has been supplied by the manufacturers of the products and, whilst the owners of the Erudus System take steps to ensure the information is regularly updated, they give no warranty and no guarantee that the information is accurate. Product information and ingredients may change, please always read product labels carefully in addition to using the information provided by Erudus One.

We do not accept liability for any inaccuracies or incorrect information contained on this site. Please visit <http://www.erudus.com/terms-and-conditions> for full terms and conditions.

CADBURY 8.25GX144 FLAKE99 1CA

Warning! This Product Specification complies with EU Food Information Regulation No. 1169/2011 (FIR) however we are still awaiting further product attributes to complete the full Erudus specification.

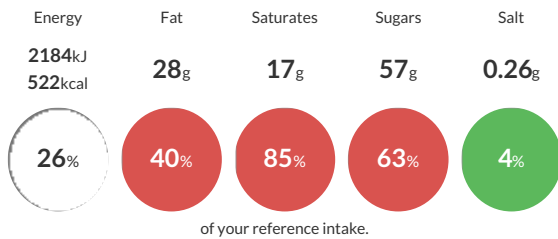
Short Product Name:
CADBURY FLAKE

The crumbliest, flakiest milk chocolate.

Traded Unit GTIN: **07622201150808** Internal GTIN: Supplier: **Mondelez UK Ltd** Suppliers Product Code: **4258175**

Reference Intake

Each 100g portion contains:



Typical values per 100g: Energy 2184kJ 522kcal

Nutritional Information

Typical Values	Per 100g
Energy	2184kJ 522kCal
Carbohydrates	58g
of which sugars	57g
Fat	28g
of which saturates	17g
Fibre	2.8g
Protein	7.2g
Salt	0.26g

Allergy Information

Key: **Contains** **May Contain**



Allergen Statement

MILK SOLIDS 14% MINIMUM.

COCOA SOLIDS 25% MINIMUM.

CONTAINS VEGETABLE FATS IN ADDITION TO COCOA BUTTER.

Ingredients

Ingredients: MILK, sugar, cocoa mass, cocoa butter, whey permeate powder (from MILK), vegetable fats (palm, shea), whole MILK powder, emulsifiers (E442, E476), flavourings.

Dietary Information

Key: **Suitable for**

