

Supplier's Product Code : 44773 14153
 Product Added : 29 July 2024
 Last Updated by Supplier : 29 July 2024
 erudus id : d9719d715b124b279d7f4c24c381f130



The information on the **Erudus System** has been supplied by the manufacturers of the products and, whilst the owners of the Erudus System take steps to ensure the information is regularly updated, they give no warranty and no guarantee that the information is accurate. Product information and ingredients may change, please always read product labels carefully in addition to using the information provided by Erudus One.

We do not accept liability for any inaccuracies or incorrect information contained on this site. Please visit <http://www.erudus.com/terms-and-conditions> for full terms and conditions.

44773 Toffee & Honeycomb Cheesecake (Pre-cut 14 Portion)

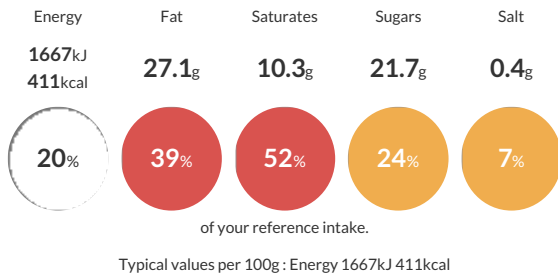
Short Product Name:
 Toffee & Honeycomb Cheesecake

A layer of sweet biscuit with honeycomb caramel pieces and toffee sauce, white chocolate cheesecake, fresh vanilla cream. Decorated with white chocolate shavings, chocolate coated honeycomb, caramel fudge pieces, toffee sauce and dusted with cocoa powder.

Traded Unit GTIN: 5060109335644 Internal GTIN: Supplier : Eatons Patisserie Suppliers Product Code : 44773 14153

Reference Intake

Each 100g portion contains:



Nutritional Information

Typical Values	Per 100g
Energy	1667kJ 411kCal
Carbohydrates	33.8g
of which sugars	21.7g
Fat	27.1g
of which saturates	10.3g
Fibre	0.9g
Protein	5.9g
Salt	0.4g

Allergy Information

Key: Contains May Contain



Allergen Statement

For allergens please refer to ingredients in **CAPITAL LETTERS**.
 Caution: Produced in a factory which is not a nut free environment.
 May contain Nuts, Egg, Barley, and Oats.

Dietary Information

Key: Suitable for



Ingredients

Cream (MILK), WHEAT Flour (With Calcium, Iron, Niacin, Thiamin), Wholemeal WHEAT Flour, Vegetable Shortening (Palm & Rapeseed Oil), Sugar, Partially Invert Sugar Syrup, Raising Agents (Sodium Bicarbonate, Ammonium Carbonate), Salt, Light Soft Cheese (11%) [Skimmed MILK, Cream (MILK), Skimmed MILK Powder, Lactic Cultures, Salt, MILK Protein, Preservative (Potassium Sorbate E202)], Caramel Sauce (4%) [Sweetened Condensed MILK (MILK, Sugar), Golden Syrup (Partially Inverted Refiners Syrup), Glucose Syrup, Palm Kernel, Water, Unsalted Butter (MILK), Sugar, Palm Oil, Gelling Agent (Pectin E440), Emulsifiers (Sunflower, Rapeseed Lecithin E322, Sorbitan Tri-Stearate E492), Salt, Preservative (Potassium Sorbate E202)], Vegetable Oil (Palm & Rapeseed Oil), Water, Salt, Emulsifier (Mono- And Diglycerides Of Fatty Acids E471), Flavouring, Colouring (Annatto Bixin E160b(i), Curcumin E100), White Chocolate (Sugar, Cocoa Butter, Whole MILK Powder, Emulsifier (SOYA Lecithin), Natural Vanilla Flavouring), Honeycomb Chunks (2%) (Sugar, Glucose Syrup, Raising Agent E500ii, Rice Flour) Chocolate (Sugar, Palm Oil, Whey Powder (MILK), Cocoa Powder, Emulsifier E322 SOYA Lecithin, Stabiliser: Sorbitan Tristearate) [SULPHITES], Mini Caramel Fudge Cubes (2%) [Sugar, Full Cream Condensed MILK, Fondant (Sugar, Glucose (SULPHITES), Water), Glucose Syrup, Palm Oil, Water, Salt], Icing Sugar [Anti Caking Agent (Tricalcium Phosphate E341iii)], Soft Light Brown Sugar (Sugar And Cane Molasses), Invert Sugar Syrup, MILK Chocolate (Sugar, Cocoa Butter, Cocoa Mass, Skimmed MILK Powder, MILK Sugar, Whey Powder (MILK), Anhydrous MILK Fat, Emulsifier E322 (SOYA)), Honeycomb Granules (1%) (Sugar, Glucose Syrup, Water, Raising Agent E500ii), Glazing Agent (Stabiliser E414, Sucrose, Honey), Gelatine, Fat Reduced Cocoa Powder (Cocoa Solids 90%), Acidity Regulator: Potassium Carbonate, Vanilla Flavourings, Colour Ammonia Caramel E150c, Glucose Syrup, Invert Sugar Syrup, Fructose Syrup, Natural Vanilla, Natural Bourbon Vanilla Flavouring, Vegetable Concentrates (Pumpkin And Carrot), Acidity Regulator (Citric Acid E330), Stabiliser (Carrageenan E407).