

Supplier's Product Code :  
Product Added :  
Last Updated by Supplier :  
erudus id :

CMC445  
24 November 2020  
15 February 2023  
d9d42c1ac7a84479b52ef05755abd656



The information on the [Erudus System](#) has been supplied by the manufacturers of the products and, whilst the owners of the Erudus System take steps to ensure the information is regularly updated, they give no warranty and no guarantee that the information is accurate. Product information and ingredients may change, please always read product labels carefully in addition to using the information provided by Erudus One.

We do not accept liability for any inaccuracies or incorrect information contained on this site. Please visit <http://www.erudus.com/terms-and-conditions> for full terms and conditions.

## Chicken Balti

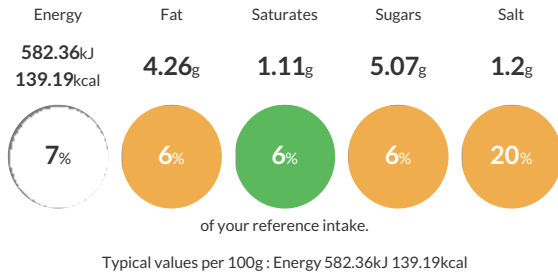
Short Product Name:  
Chicken Balti

Sous vide cooked Chicken thighs in a Balti sauce with diced onion

Traded Unit GTIN: - Internal GTIN: Supplier: **Cooked Meat Company Ltd** Suppliers Product Code: **CMC445**

### Reference Intake

Each 100g portion contains:



### Nutritional Information

Typical Values	Per 100g
Energy	582.36kJ 139.19kCal
Carbohydrates	12.35g
of which sugars	5.07g
Fat	4.26g
of which saturates	1.11g
Fibre	0.45g
Protein	11.95g
Salt	1.2g

### Allergy Information

Key: **Contains** **May Contain**



### Dietary Information

Key: **Suitable for**



### Ingredients

Chicken (48%), Water, Garlic & Chilli Glaze [Sugar, Garlic Powder, Curry Blend (Ground Turmeric, **MUSTARD** Seed, Fenugreek Seed, Coriander Seed, **WHEAT** Flour (Contains: Calcium, Iron, Niacin, Thiamin), Salt, Chilli Powder, Fennel Seed, Cumin Seed, Onion Powder), Onion Powder, Garam Masala, Maize Starch, Salt, Garlic Granules, Maltodextrin, Tomato Powder, Modified Maize Starch, Chilli Powder, Acidity Regulator (Citric Acid), Crushed Chillies, Dried Rubbed Parsley, Ground Fenugreek, Ground Turmeric, Paprika Extract, Rapeseed Oil, Thickener (Guar Gum), Natural Flavouring (Capsicum Extract, Rapeseed Oil)], Onion, Tomato Purée.