

Supplier's Product Code :
Product Added :
Last Updated by Supplier :
erudus id :

F10008
29 October 2024
29 October 2024
dc1305eee9554e0bb59f883a45ec3a50



The information on the Erudus System has been supplied by the manufacturers of the products and, whilst the owners of the Erudus System take steps to ensure the information is regularly updated, they give no warranty and no guarantee that the information is accurate. Product information and ingredients may change, please always read product labels carefully in addition to using the information provided by Erudus One.

We do not accept liability for any inaccuracies or incorrect information contained on this site. Please visit <http://www.erudus.com/terms-and-conditions> for full terms and conditions.

Judes Honeycomb Ice Cream - 6 x 4L

Short Product Name:

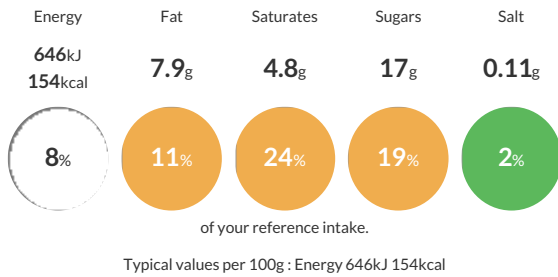
Jude's Honeycomb Ice Cream - 6 x 4L

Honeycomb Ice Cream

Traded Unit GTIN: 05060081110239 Internal GTIN: 5060081110673 Supplier: Judes Ices Suppliers Product Code: F10008

Reference Intake

Each 100g portion contains:



Nutritional Information

Typical Values	Per 100g
Energy	646kJ 154kCal
Carbohydrates	18g
of which sugars	17g
Fat	7.9g
of which saturates	4.8g
Fibre	-g
Protein	2.7g
Salt	0.11g

Allergy Information

Key: Contains May Contain



Dietary Information

Key: Suitable for



Allergen Statement

For allergens see ingredients in bold.

Ingredients

fresh whole **milk**, fresh double cream (**milk**), sugar, honeycomb pieces (8.5%) (sugar, glucose syrup, water, cocoa butter), skimmed **milk** powder, dextrose, emulsifier (mono- and diglycerides of fatty acids), stabilisers (locust bean gum, guar gum), natural flavouring, colour (plain caramel), pasteurised free range **egg** yolk.