

Supplier's Product Code :
Product Added :
Last Updated by Supplier :
erudus id :

012341P
29 February 2024
01 March 2024
dd103b4cb43d46ba8a0c93d0b07cdf8d



The information on the [Erudus System](#) has been supplied by the manufacturers of the products and, whilst the owners of the Erudus System take steps to ensure the information is regularly updated, they give no warranty and no guarantee that the information is accurate. Product information and ingredients may change, please always read product labels carefully in addition to using the information provided by Erudus One.

We do not accept liability for any inaccuracies or incorrect information contained on this site. Please visit <http://www.erudus.com/terms-and-conditions> for full terms and conditions.

Purple Pineapple Beef Brisket with Salsa Sauce 1kg

Short Product Name:

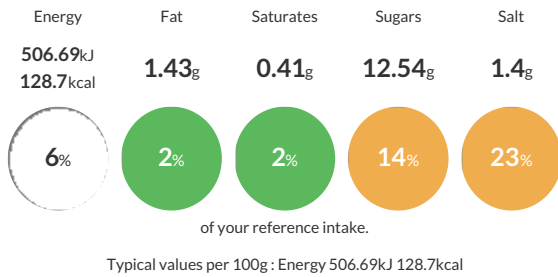
Beef Brisket with Salsa Sauce

Roast pepper salsa with beef brisket, red kidney beans, sliced peppers and crushed chillies

Traded Unit GTIN: Internal GTIN: Supplier: Suppliers Product Code:

Reference Intake

Each 100g portion contains:



Nutritional Information

Typical Values	Per 100g
Energy	506.69kJ 128.7kCal
Carbohydrates	16.88g
of which sugars	12.54g
Fat	1.43g
of which saturates	0.41g
Fibre	2.12g
Protein	9.59g
Salt	1.4g

Allergy Information

Key: Contains May Contain



Dietary Information

Key: Suitable for



Ingredients

Roast Pepper Salsa 50% (Water, glucose syrup solids, roast peppers, spirit vinegar, tomato paste, onion powder, thickener E1422 modified starch, molasses, red pepper flake, salt, garlic powder, rapeseed oil, herb coriander, spice cayenne), Beef Brisket 25% (Beef, salt), Red Kidney Beans 15% (Red kidney beans, water, salt), Sliced Mixed Peppers 9% (Green peppers, red peppers, yellow peppers), Chilli crushed 1% (Crushed chillies).