

Supplier's Product Code :
Product Added :
Last Updated by Supplier :
erudus id :

W2-E4-U71
25 March 2020
13 February 2023
dd1b9ae6b4da45b0a87d61dcb910207e



The information on the **Erudus System** has been supplied by the manufacturers of the products and, whilst the owners of the Erudus System take steps to ensure the information is regularly updated, they give no warranty and no guarantee that the information is accurate. Product information and ingredients may change, please always read product labels carefully in addition to using the information provided by Erudus One.

We do not accept liability for any inaccuracies or incorrect information contained on this site. Please visit <http://www.erudus.com/terms-and-conditions> for full terms and conditions.

WHITE CHOCOLATE 8 x 2.5kg

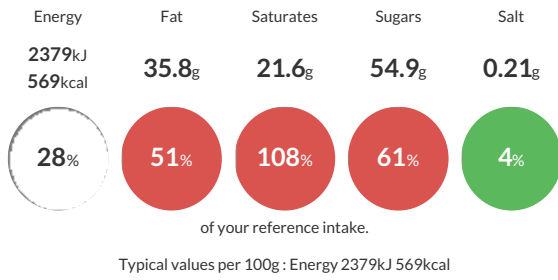
Short Product Name:
WHITE CHOCOLATE

FINEST BELGIAN WHITE CHOCOLATE

Traded Unit GTIN: **5410522516760** Internal GTIN: **5410522516777** Supplier: **Barry Callebaut Belgium NV & IBC Belgium** Suppliers Product Code: **W2-E4-U71**

Reference Intake

Each 100g portion contains:



Nutritional Information

Typical Values	Per 100g
Energy	2379kJ 569kCal
Carbohydrates	55.3g
of which sugars	54.9g
Fat	35.8g
of which saturates	21.6g
Fibre	0g
Protein	6g
Salt	0.21g

Allergy Information

Key: **Contains** **May Contain**



Dietary Information

Key: **Suitable for**



Ingredients

Sugar 46.5%,Cocoa butter 29.5%,Whole MILK powder 23.5%,Emulsifier SOYA lecithin <1%,Natural vanilla Flavouring <1%