

Supplier's Product Code :
Product Added :
Last Updated by Supplier :
erudus id :

F02388
24 May 2022
24 May 2022
dd6541419e1e46d382a6bf086d64c5c5



The information on the **Erudus System** has been supplied by the manufacturers of the products and, whilst the owners of the Erudus System take steps to ensure the information is regularly updated, they give no warranty and no guarantee that the information is accurate. Product information and ingredients may change, please always read product labels carefully in addition to using the information provided by Erudus One.

We do not accept liability for any inaccuracies or incorrect information contained on this site. Please visit <http://www.erudus.com/terms-and-conditions> for full terms and conditions.

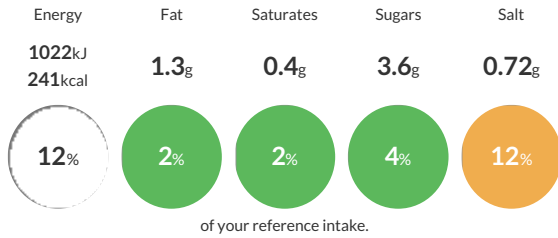
Kara Medium White Bloomer

A medium sliced D shaped white bloomer, perfect for toast and sandwiches.

Traded Unit GTIN: **05051788123882** Internal GTIN: Supplier: **Kara Foodservice (Fletchers)** Suppliers Product Code: **F02388**

Reference Intake

Each 100g portion contains:



Typical values per 100g : Energy 1022kJ 241kcal

Nutritional Information

Typical Values	Per 100g
Energy	1022kJ 241kCal
Carbohydrates	47.5g
of which sugars	3.6g
Fat	1.3g
of which saturates	0.4g
Fibre	2.7g
Protein	8.5g
Salt	0.72g

Allergy Information

Key: **Contains** **May Contain**



Allergen Statement

For allergens (including cereals containing gluten), see ingredients in **CAPITALS**. Also, may contain soya.

Ingredients

Wheat Flour (**WHEAT** Flour, Calcium Carbonate, Niacin, Iron, Thiamin), Water, Palm Oil, Salt, **WHEAT** Gluten, Yeast, Emulsifier (E472e), Spirit Vinegar, Preservative (E282), Flour Treatment Agent (E300).

Dietary Information

Key: **Suitable for**

