

Supplier's Product Code :
Product Added :
Last Updated by Supplier :
erudus id :

F10071
29 October 2024
29 October 2024
dd84158767ac4ba59d4b70637915994d



The information on the **Erudus System** has been supplied by the manufacturers of the products and, whilst the owners of the Erudus System take steps to ensure the information is regularly updated, they give no warranty and no guarantee that the information is accurate. Product information and ingredients may change, please always read product labels carefully in addition to using the information provided by Erudus One.

We do not accept liability for any inaccuracies or incorrect information contained on this site. Please visit <http://www.erudus.com/terms-and-conditions> for full terms and conditions.

Judes Salted Caramel Ice Cream - 6 x 4L

Short Product Name:

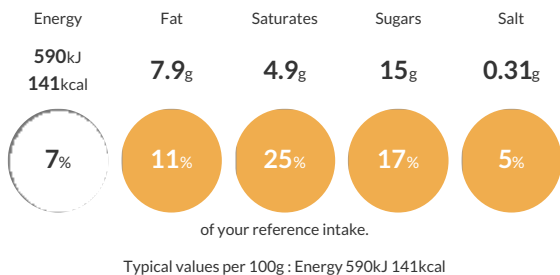
Judes Salted Caramel Ice Cream - 6 x 4L

Judes Salted Caramel Ice cream

Traded Unit GTIN: **05060081110666** Internal GTIN: **5060081110840** Supplier: **Judes Ices** Suppliers Product Code: **F10071**

Reference Intake

Each 100g portion contains:



Nutritional Information

Typical Values	Per 100g
Energy	590kJ 141kCal
Carbohydrates	15g
of which sugars	15g
Fat	7.9g
of which saturates	4.9g
Fibre	-g
Protein	2.5g
Salt	0.31g

Allergy Information

Key: **Contains** **May Contain**



Allergen Statement

For allergens see ingredients in bold.

Ingredients

fresh whole **milk**, fresh double cream (**milk**), caramel (13%) (sweetened condensed **milk**, sugar, glucose-fructose syrup, water), sugar, skimmed **milk** powder, colour (plain caramel), emulsifier (mono- and diglycerides of fatty acids), stabilisers (locust bean gum, guar gum), pasteurised free range **egg** yolk, sea salt.

Dietary Information

Key: **Suitable for**

