

Supplier's Product Code :  
Product Added :  
Last Updated by Supplier :  
erudus id :

ITM1130  
24 October 2019  
15 February 2022  
dd854b3bbaf24484ab0ba0615f138330



The information on the Erudus System has been supplied by the manufacturers of the products and, whilst the owners of the Erudus System take steps to ensure the information is regularly updated, they give no warranty and no guarantee that the information is accurate. Product information and ingredients may change, please always read product labels carefully in addition to using the information provided by Erudus One.

We do not accept liability for any inaccuracies or incorrect information contained on this site. Please visit <http://www.erudus.com/terms-and-conditions> for full terms and conditions.

## Maryland Farmhouse Butter 20 x 250g

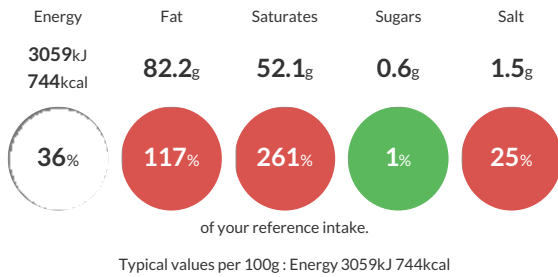
Short Product Name:  
Farmhouse Whey Butter

Made from whey cream, this butter is rich and lightly salted, full of the character of traditional farmhouse butter.

Traded Unit GTIN: 05016694410150 Internal GTIN: 5011211000142 Supplier: A J & R G Barber Ltd Suppliers Product Code: ITM1130

### Reference Intake

Each 100g portion contains:



### Nutritional Information

Typical Values	Per 100g
Energy	3059kJ 744kCal
Carbohydrates	0.6g
of which sugars	0.6g
Fat	82.2g
of which saturates	52.1g
Fibre	-g
Protein	0.6g
Salt	1.5g

### Allergy Information

Key: Contains May Contain



#### Gluten Claim

Gluten content is less than 20ppm.

#### Allergen Statement

For allergens, please see ingredients in bold.

### Ingredients

Butter (MILK), Salt

### Dietary Information

Key: Suitable for

