

Supplier's Product Code :
Product Added :
Last Updated by Supplier :
erudus id :

PL186007
18 March 2024
18 March 2024
de6f23c688d0431885da81d42045516c



The information on the Erudus System has been supplied by the manufacturers of the products and, whilst the owners of the Erudus System take steps to ensure the information is regularly updated, they give no warranty and no guarantee that the information is accurate. Product information and ingredients may change, please always read product labels carefully in addition to using the information provided by Erudus One.

We do not accept liability for any inaccuracies or incorrect information contained on this site. Please visit <http://www.erudus.com/terms-and-conditions> for full terms and conditions.

Pastificio Liguori Linguine #7 20x500g

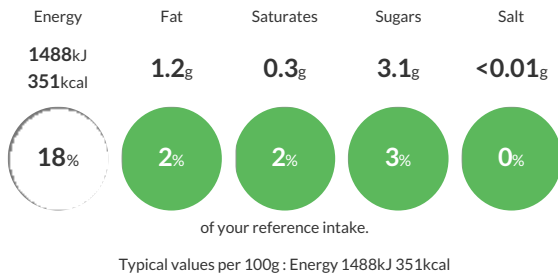
Short Product Name:
Linguine #7 500g

Bronze die pasta made with 100% Italian durum wheat.

Traded Unit GTIN: 18008912010079 Internal GTIN: 8008912010072 Supplier: Bonta Italia Ltd Suppliers Product Code: PL186007

Reference Intake

Each 100g portion contains:



Nutritional Information

Typical Values	Per 100g
Energy	1488kJ 351kCal
Carbohydrates	69g
of which sugars	3.1g
Fat	1.2g
of which saturates	0.3g
Fibre	3g
Protein	14.5g
Salt	<0.01g

Allergy Information

Key: Contains May Contain



Allergen Statement

May also contain **SOYA** and **MUSTARD**

Ingredients

Durum Wheat semolina.

Dietary Information

Key: Suitable for

